

## 10-12505: Mouse Monoclonal Antibody to CD7(Clone :BS8) (Discontinued)

<b>Clonality :</b>	Monoclonal
<b>Clone Name :</b>	BS8
<b>Application :</b>	IHC
<b>Reactivity :</b>	Human
<b>Gene :</b>	CD7
<b>Gene ID :</b>	924
<b>Uniprot ID :</b>	P09564
<b>Alternative Name :</b>	GP40, T-cell leukemia antigen, T-cell surface antigen Leu-9, TP4

### Description

CD7 transmembrane protein is a member of the immunoglobulin superfamily. This protein is found on thymocytes, mature T cells and NK-cells. It plays an essential role in T-cell interactions and also in T-cell/B-cell interaction during early lymphoid development.

### Product Info

<b>Amount :</b>	0.1 ml / 0.5 ml
<b>Content :</b>	TRIS with 0.03% sodium azide, pH7.2
<b>Storage condition :</b>	Store at 4°C

### Application Note

Immunohistochemical Analysis :-1:250

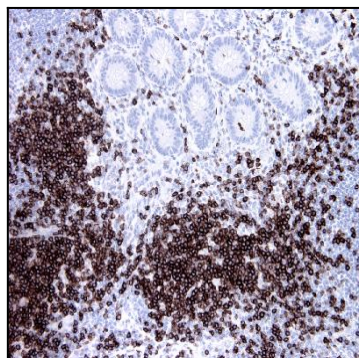


Figure-1: Normal appendix (Figure-1), tonsil (Figure-2) have stained with CD7 (Clone: BS8) antibody using 1:250 dilution and pH9 tris-EDTA pretreatment. CD7 positive T-cells have strong membranous label.

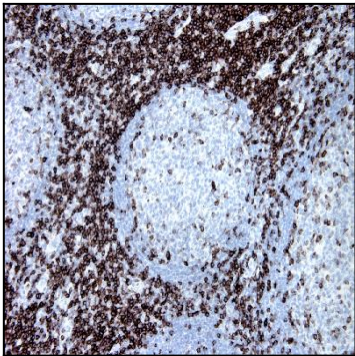


Figure-2: Normal appendix (Figure-1), tonsil (Figure-2) have stained with CD7 (Clone: BS8) antibody using 1:250 dilution and pH9 tris-EDTA pretreatment. CD7 positive T-cells have strong membranous label.

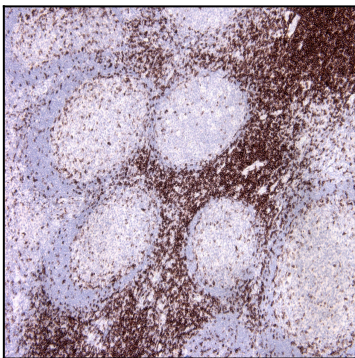


Figure-3: Tonsil section has been stained using CD7 antibody (Clone: BS8) with 1:250 dilution. CD7 positive T cells have strong membranous label.