

**10-12508: Mouse Monoclonal Antibody to CD34(Clone :BS72)**

<b>Clonality :</b>	Monoclonal
<b>Clone Name :</b>	BS72
<b>Application :</b>	IHC
<b>Reactivity :</b>	Human
<b>Gene :</b>	CD34
<b>Gene ID :</b>	947
<b>Uniprot ID :</b>	P28906
<b>Alternative Name :</b>	CD34

**Product Info**

<b>Amount :</b>	0.1 ml / 0.5 ml
<b>Content :</b>	TRIS with 0.03% sodium azide, pH7.2
<b>Storage condition :</b>	Store at 4°C

**Application Note**

Immunohistochemical Analysis :-1:200

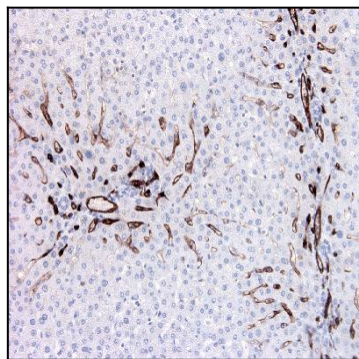


Figure-1: Liver section has been stained using CD34 antibody (Clone: BS72) with 1:200 dilution. Sinusoids of liver have been stained moderate in near of the portal veins. Portal veins stained with strong intensity.

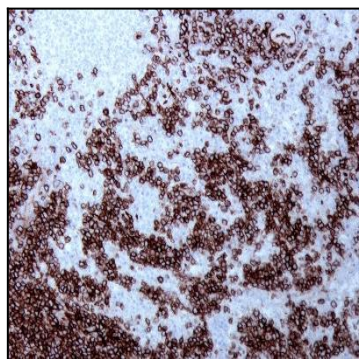


Figure-2: Spleen section has been stained using CD34 antibody (Clone: BS72) with 1:200 dilution with strong intensity. Neoplastic cells have a strong label.

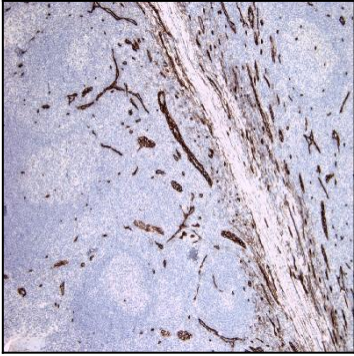


Figure-3: Tonsil section has been stained using CD34 antibody (Clone: BS72) with 1:200 dilution. Vascular endothelia have been stained strongly.

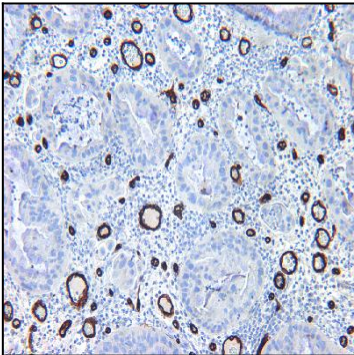


Figure-4: Urinary bladder carcinoma section has been stained using CD34 antibody (Clone: BS72) with 1:200 dilution.