

## 10-12509: Mouse Monoclonal Antibody to CD22(Clone :BS100) (Discontinued)

<b>Clonality :</b>	Monoclonal
<b>Clone Name :</b>	BS100
<b>Application :</b>	IHC
<b>Reactivity :</b>	Human
<b>Gene :</b>	CD22
<b>Gene ID :</b>	933
<b>Uniprot ID :</b>	P20273
<b>Alternative Name :</b>	B-lymphocyte cell adhesion molecule, Sialic acid-binding Ig-like lectin 2, T-cell surface antigen Leu-14, SIGLEC2

### Product Info

<b>Amount :</b>	0.1 ml / 0.5 ml
<b>Content :</b>	TRIS with 0.03% sodium azide, pH7.2
<b>Storage condition :</b>	Store at 4°C

### Application Note

Immunohistochemical Analysis :-1:200

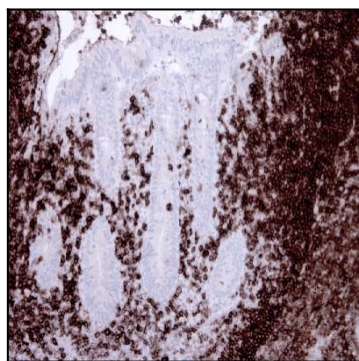


Figure-1: Appendix section have been stained using CD22 antibody (Clone: BS100) with 1:200 dilution. B cells have strong membranous label.

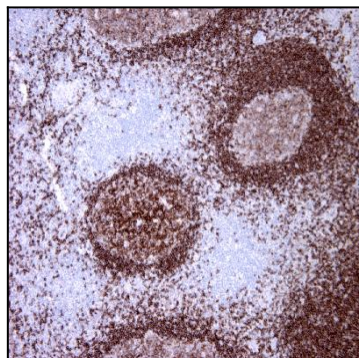


Figure-2: Tonsil section have been stained using CD22 antibody (Clone: BS100) with 1:200 dilution. Mantle zone B cells have strong membranous label and maturing B cells in germinal center have moderate cytoplasmic and membranous label.

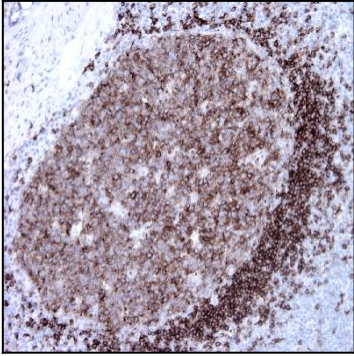


Figure-3: Tonsil section has been stained using CD22 antibody (Clone: BS100) with 1:200 dilution. Mantle zone B cells have strong membranous label.