

10-12512: Rabbit Monoclonal Antibody to CD3e(Clone :BSR10) (Discontinued)

Clonality :	Monoclonal
Clone Name :	BSR10
Application :	IHC
Reactivity :	Human
Gene :	CD3E
Gene ID :	916
Uniprot ID :	P07766
Alternative Name :	T-cell surface antigen T3/Leu-4 epsilon chain, T3E

Product Info

Amount :	0.1 ml / 0.5 ml
Content :	TRIS with 0.03% sodium azide, pH7.2
Storage condition :	Store at 4°C

Application Note

Immunohistochemical Analysis :-1:200

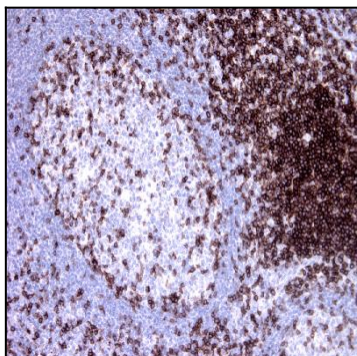


Figure-1: Tonsil section has been stained using CD3e antibody (Clone: BSR10) with 1:200 dilution. All T cells should be labelled and scattered T cells should be stained from germinal center without staining in B cells.

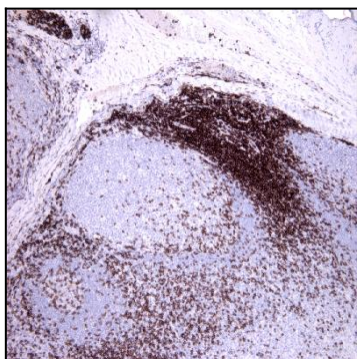


Figure-2: Tonsil section has been stained using CD3e antibody (Clone: BSR10) with 1:200 dilution. All T cells have strongly membranous staining pattern.

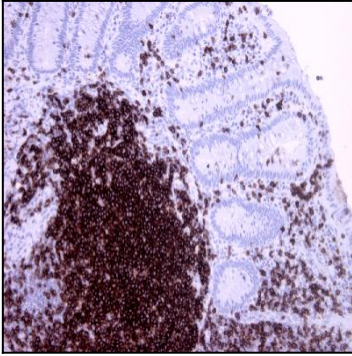


Figure-3: Appendix section has been stained using CD3e antibody (Clone: BSR10) with 1:200 dilution. T cells and intraepithelial T cells stained strongly.