

## 10-12515: Mouse Monoclonal Antibody to CD23(Clone :BS20)

<b>Clonality :</b>	Monoclonal
<b>Clone Name :</b>	BS20
<b>Application :</b>	IHC
<b>Reactivity :</b>	Human
<b>Gene :</b>	FCER2
<b>Gene ID :</b>	2208
<b>Uniprot ID :</b>	P06734
<b>Alternative Name :</b>	FCER2, CD23A, CLEC4J, FCE2, IGEBF

### Product Info

<b>Amount :</b>	0.1 ml / 0.5 ml
<b>Content :</b>	TRIS with 0.03% sodium azide, pH7.2
<b>Storage condition :</b>	Store at 4°C

### Application Note

Immunohistochemical Analysis :-1:200

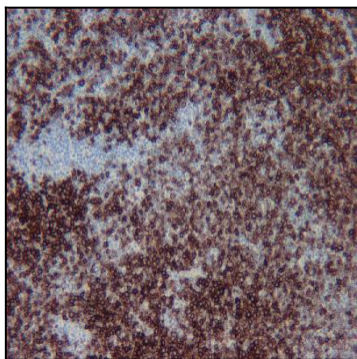


Figure-1: Tumor section of B-cell have been stained using CD23 antibody (Clone: BS20) with 1:200 dilution. Neoplastic cells have strong to moderate label.

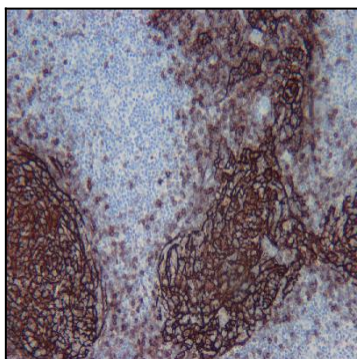


Figure-2: Follicular lymphoma section have been stained using CD23 antibody (Clone: BS20) with 1:200 dilution. Dendritic cells have strong label.

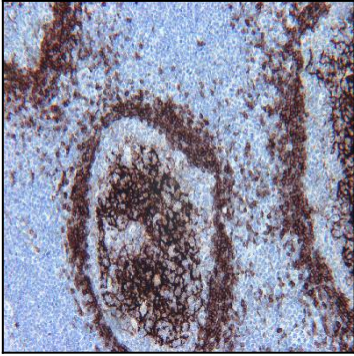


Figure-3: Tonsil section have been stained using CD23 antibody (Clone: BS20) with 1:200 dilution. B cells of mantle zone have strong or moderate membranous label and follicular dendritic cells stained strongly.