

## 10-12518: Mouse Monoclonal Antibody to CD14(Clone :BS9) (Discontinued)

<b>Clonality :</b>	Monoclonal
<b>Clone Name :</b>	BS9
<b>Application :</b>	IHC
<b>Reactivity :</b>	Human
<b>Gene :</b>	CD14
<b>Gene ID :</b>	929
<b>Uniprot ID :</b>	P08571
<b>Alternative Name :</b>	Myeloid cell-specific leucine-rich glycoprotein
<b>Isotype :</b>	Mouse IgG1

### Description

CD14 antigen is a GPI-linked glycoprotein with a molecular weight of 55kD. The CD14 antigen is expressed on cells of the myelomonocytic lineage including monocytes, macrophages and Langerhans cells. Low expression is observed on neutrophils and on human B cells. CD14 antigen is a receptor for bacterial lipopolysaccharide (LPS, endotoxin) and the lipopolysaccharide binding protein (LBP). LBP and CD14 antigen serves two physiological roles. These proteins act as opsonin and opsonic receptor, respectively, to promote the phagocytic uptake of bacteria or LPScoted particles by macrophages.

### Product Info

<b>Amount :</b>	0.1 ml / 0.5 ml
<b>Content :</b>	TRIS with 0.03% sodium azide, pH7.2
<b>Storage condition :</b>	Store at 4°C

### Application Note

Immunohistochemical Analysis :-1:200

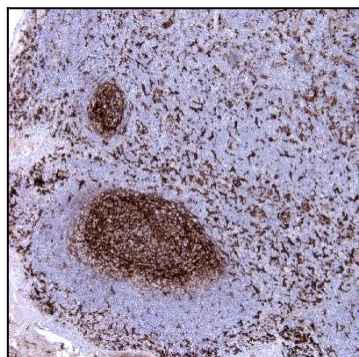


Figure-1: Tonsil section have been stained using CD14 antibody (Clone: BS9) with 1:200 dilution. Follicular dendritic cells have strong label as well as macrophages in perifollicular area.

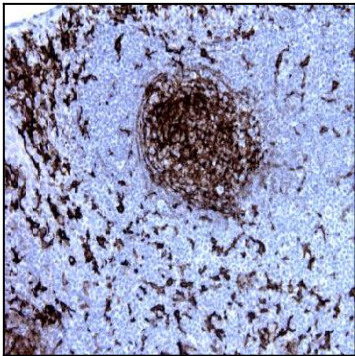


Figure-2: Tonsil (x200) section have been stained using CD14 antibody (Clone: BS9) with 1:200 dilution. Follicular dendritic cells have strong label as well as macrophages in perifollicular area.

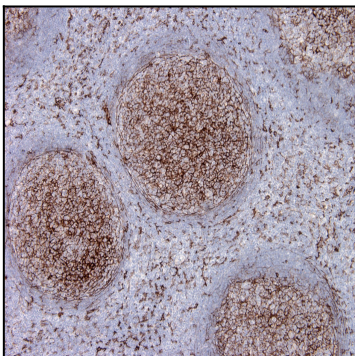


Figure-3: Tonsil section have been stained using CD14 antibody (Clone: BS9) with 1:200 dilution. Follicular dendritic cells have strong label as well as macrophages in perifollicular area.

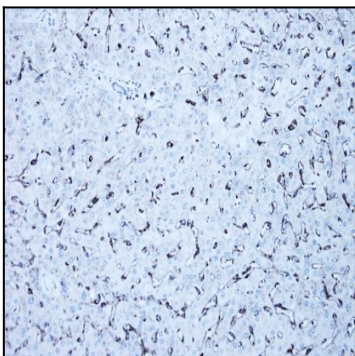


Figure-4: Liver section has been stained using CD14 antibody (Clone: BS9) with 1:200 dilution. Kupffer cells have strong to moderate label.