

## 10-12522: Mouse Monoclonal Antibody to CD31/PECAM1(Clone :BS50)(Discontinued)

<b>Clonality :</b>	Monoclonal
<b>Clone Name :</b>	BS50
<b>Application :</b>	IHC
<b>Reactivity :</b>	Human
<b>Gene :</b>	Pecam1
<b>Gene ID :</b>	18613
<b>Uniprot ID :</b>	Q08481
<b>Alternative Name :</b>	platelet endothelial cell adhesion molecule 1
<b>Isotype :</b>	Mouse IgG1

### Description

CD31, also known as platelet endothelial cell adhesion molecule 1 (PECAM1), is a type I integral membrane glycoprotein and a member of the immunoglobulin superfamily of cell surface receptors. It is constitutively expressed on the surface of endothelial cells, and concentrated at the junction between them. CD31 has been used to measure angiogenesis in association with tumor recurrence. Other studies have also indicated that CD31 and CD34 can be used as markers for myeloid progenitor cells and recognize different subsets of myeloid leukemia infiltrates (granular sarcomas).

### Product Info

<b>Amount :</b>	0.1 ml / 0.5 ml
<b>Content :</b>	TRIS with 0.03% sodium azide, pH7.2
<b>Storage condition :</b>	Store at 4°C

### Application Note

Immunohistochemical Analysis :-1:200

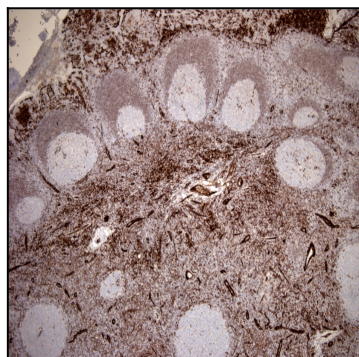


Figure-1: Tonsil section has been stained using CD31 antibody (Clone: BS50) with 1:200 dilution. Mantle zone lymphocytes have moderate label.

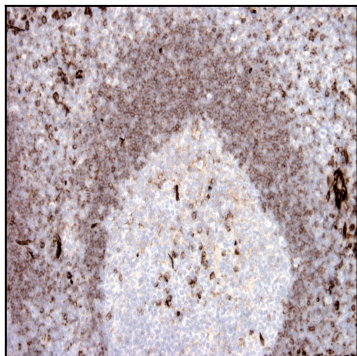


Figure-2: Tonsil section has been stained using CD31 antibody (Clone: BS50) with 1:200 dilution. Mantle zone lymphocytes have moderate label.

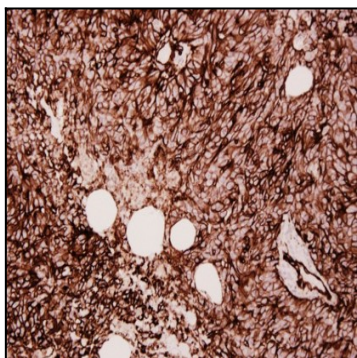


Figure-3: Angiosarcoma section has been stained using CD31 antibody (Clone: BS50) with 1:200 dilution. Neoplastic cells have strong label.

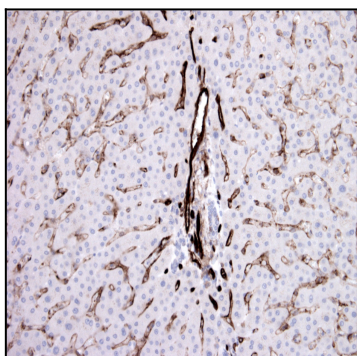


Figure-4: Liver section has been stained using CD31 antibody (Clone: BS50) with 1:200 dilution. Sinudoids of liver have been stained moderate and portal veins.