

## 10-12539: Mouse Monoclonal Antibody to GCG(Clone :BS25)

<b>Clonality :</b>	Monoclonal
<b>Clone Name :</b>	BS25
<b>Application :</b>	IHC
<b>Reactivity :</b>	Human
<b>Gene :</b>	GCG
<b>Gene ID :</b>	2641
<b>Uniprot ID :</b>	P01275
<b>Alternative Name :</b>	Glucagon-like peptide 1, Glucagon-like peptide 2
<b>Isotype :</b>	Mouse IgG1

### Description

The protein encoded by this gene is actually a preproprotein that is cleaved into four distinct mature peptides. One of these, glucagon, is a pancreatic hormone that counteracts the glucose-lowering action of insulin by stimulating glycogenolysis and gluconeogenesis. Glucagon is a ligand for a specific G-protein linked receptor whose signalling pathway controls cell proliferation. Two of the other peptides are secreted from gut endocrine cells and promote nutrient absorption through distinct mechanisms. Finally, the fourth peptide is similar to glicentin, an active enteroglucagon. Tissue specificity: Glucagon is secreted in the A cells of the islets of Langerhans. GLP-1, GLP-2, oxyntomodulin and glicentin are secreted from enteroendocrine cells throughout the gastrointestinal tract. GLP1 and GLP2 are also secreted in selected neurons in the brain.

### Product Info

<b>Amount :</b>	0.1 ml / 0.5 ml
<b>Content :</b>	TRIS with 0.03% sodium azide, pH7.2
<b>Storage condition :</b>	Store at 4°C

### Application Note

Immunohistochemical Analysis :-1:200

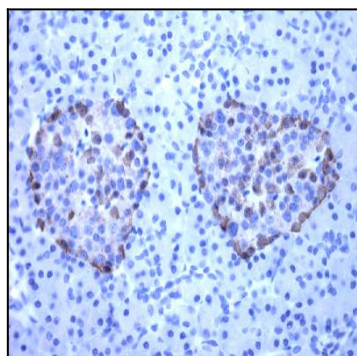


Figure-1: FFPE sections of pancreas have been stained using glucagon antibody (Clone: BS25) using 1:200 dilution . Note the intensive staining reaction of the alpha cells around the Langerhans islets. Hue of the DAB has been increased using CuSO4 post enhancement method.

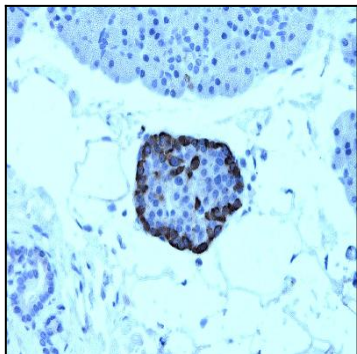


Figure-2: FFPE sections of pancreas have been stained using glucagon antibody (Clone: BS25) using 1:200 dilution . Note the intensive staining reaction of the alpha cells around the Langerhans islets. Hue of the DAB has been increased using CuSO<sub>4</sub> post enhancement method.

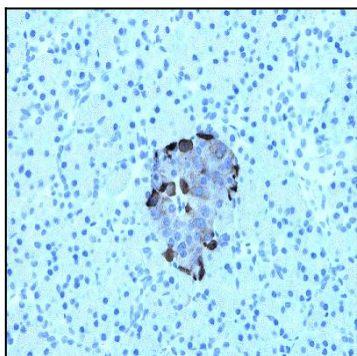


Figure-3: FFPE sections of pancreas have been stained using glucagon antibody (Clone: BS25) using 1:200 dilution . Note the intensive staining reaction of the alpha cells around the Langerhans islets. Hue of the DAB has been increased using CuSO<sub>4</sub> post enhancement method.