

10-12543: Mouse Monoclonal Antibody to Mammaglobin(Clone :BS17) (Discontinued)

Clonality : Monoclonal
Clone Name : BS17
Application : IHC
Reactivity : Human
Gene : SCGB2A2
Gene ID : 4250
Uniprot ID : Q13296
Alternative Name : Mammaglobin-1, Secretoglobin family 2A member 2, MGB1, UGB2

Product Info

Amount : 0.1 ml / 0.5 ml
Content : TRIS with 0.03% sodium azide, pH7.2
Storage condition : Store at 4°C

Application Note

Immunohistochemical Analysis :-1:200

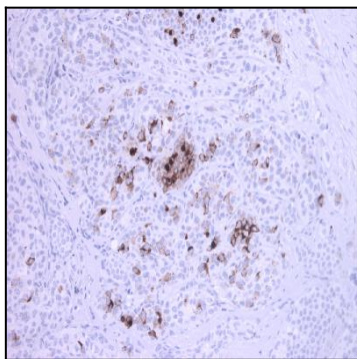


Figure-1: Breast Cancer section has been stained using Mammaglobin antibody (Clone: BS17).

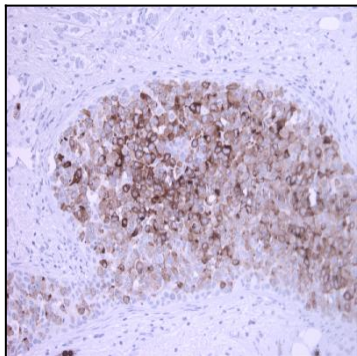


Figure-2: Breast Cancer section has been stained using Mammaglobin antibody (Clone: BS17).

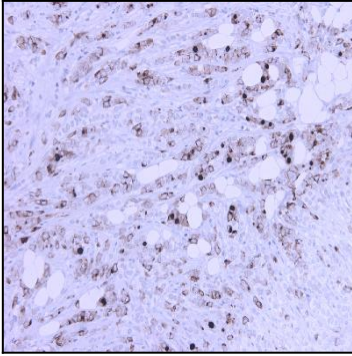


Figure-3: Breast Cancer section has been stained using Mammaglobin antibody (Clone: BS17).

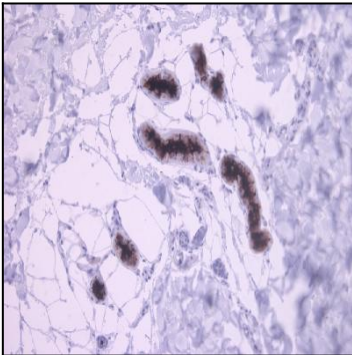


Figure-4: Skin sweat glands has been stained using Mammaglobin antibody (Clone: BS17).