

10-12549: Mouse Monoclonal Antibody to SOX10(Clone :BS7)

Clonality : Monoclonal
Clone Name : BS7
Application : IHC
Reactivity : Human
Gene : SOX10
Gene ID : 6663
Uniprot ID : P56693
Isotype : Mouse IgG1

Description

This gene encodes a member of the SOX (SRY-related HMG-box) family of transcription factors involved in the regulation of embryonic development and in the determination of the cell fate. The encoded protein may act as a transcriptional activator after forming a protein complex with other proteins. This protein acts as a nucleocytoplasmic shuttle protein and is important for neural crest and peripheral nervous system development. SOX10 is important and sensitive marker of melanoma especially for spindle cell and desmoplastic melanomas and schwannian neoplasms.

Product Info

Amount : 0.1 ml / 0.5 ml
Content : TRIS with 0.03% sodium azide, pH7.2
Storage condition : Store at 4°C

Application Note

Immunohistochemical Analysis :-1:200

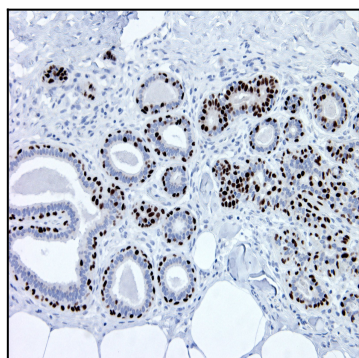


Figure-1: Breast tissue stained with SOX10 (Clone: BS7) antibody. Myoepithelial cells of breast have strong nuclear label.

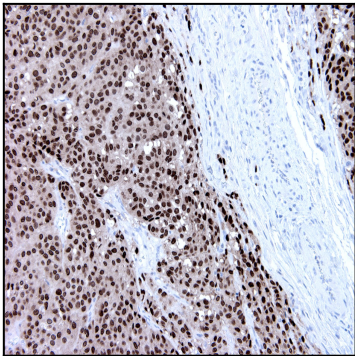


Figure-2: Melanoma tissue stained with SOX10 (Clone: BS7) antibody. Neoplastic cells have strong nuclear label.

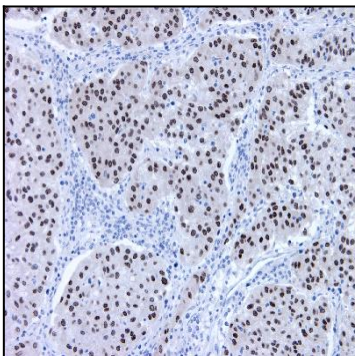


Figure-3: Melanoma tissue stained with SOX10 (Clone: BS7) antibody. Neoplastic cells have strong nuclear label.

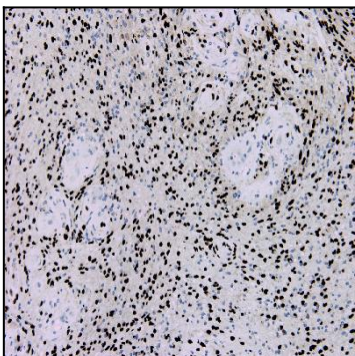


Figure-4: Schwannoma tissue stained with SOX10 (Clone: BS7) antibody. Neoplastic cells have strong nuclear label.