

10-1016: Monoclonal Antibody to CREB (Clone: ABM13H8)

Clonality :	Monoclonal
Clone Name :	ABM13H8
Application :	FACS
Reactivity :	Human
Gene :	CREB1
Gene ID :	1385
Uniprot ID :	P16220
Format :	Purified
Alternative Name :	CREB1
Isotype :	Mouse IgG1
Immunogen Information :	A partial length recombinant CREB protein (amino acids 87-292) was used as the immunogen for this antibody.

Description

Formula: C₁₇H₂₂N₄O₂

CAS#: 144875-48-9

Product Info

Amount :	25 µg / 100 µg
Purification :	Protein G purification
Content :	100 µg in 200 µl PBS containing 0.05% BSA and 0.05% sodium azide. Sodium azide is highly toxic.
Storage condition :	Store the antibody at 4°C, stable for 6 months. For long-term storage, store at -20°C. Avoid repeated freeze and thaw cycles.

Application Note

Flow Cytometry analysis: 0.5-1 µg/ 10⁶ cells

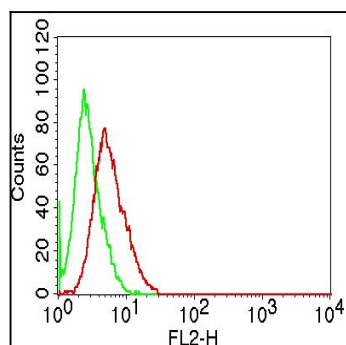


Figure-1: Intra cellular flowcytometry analysis of CREB. Anti-CREB antibody (Clone: ABM13H8) was tested in A431 cells at 0.5 µg/10⁶ cells. Green represents isotype control; red represents anti-CREB antibody. Goat anti-mouse PE conjugate was used as secondary antibody.