

## 39-2170: Polyclonal Antibody to VWF

<b>Clonality :</b>	Polyclonal
<b>Application :</b>	IHC,WB
<b>Reactivity :</b>	Rat,Mouse
<b>Gene :</b>	Vwf
<b>Gene ID :</b>	22371
<b>Uniprot ID :</b>	Q8CIZ8
<b>Format :</b>	Purified
<b>Alternative Name :</b>	von Willebrand factor, von Willebrand antigen II, von Willebrand antigen 2
<b>Isotype :</b>	Rabbit IgG
<b>Immunogen Information :</b>	E.coli-derived mouse VWF recombinant protein (Position: M1304-E1452) was used as the immunogen for this antibody.

### Product Info

<b>Amount :</b>	100 µg
<b>Content :</b>	Each vial contains 5mg BSA, 0.9mg NaCl, 0.2mg Na <sub>2</sub> HPO <sub>4</sub> , 0.05mg NaN <sub>3</sub> (In Lyophilized form). Add 0.2ml of distilled water will yield a concentration of 500 µg/ml.
<b>Storage condition :</b>	At -20°C for one year. After reconstitution, at 4°C for one month. It can also be aliquotted and stored frozen at -20°C for a longer time. Avoid repeated freezing and thawing.

### Application Note

Western blot: 0.1-0.5 µg/ml, Immunohistochemistry (Paraffin-embedded Section): 0.5-1µg/ml

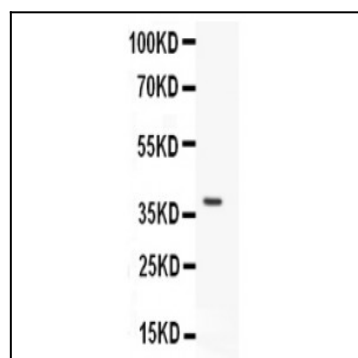


Figure-1: Westernblot analysis of Anti-mVWF in Recombinant Mouse VWF Protein using 0.5ng of mVWF (39-2170).

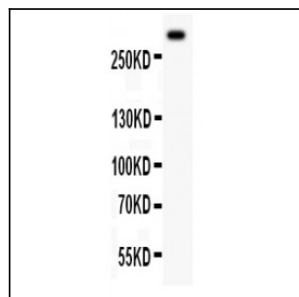


Figure-2: Westernblot analysis of Anti-mVWF in Mouse Lung Tissue Lysate using 50 µg of mVWF (39-2170).

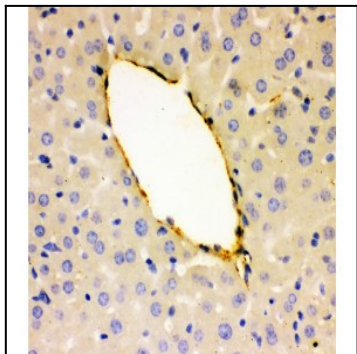


Figure-3: Immunohistochemical analysis of Anti-mVWF in Mouse Liver Tissue Lysate using mVWF (39-2170).