

10-102-P: Mouse IgG2a Isotype Control (Clone: 231)- PE

Clonality : Monoclonal
Clone Name : 231
Application : IHC,FACS
Conjugate : PE
Format : Purified
Isotype : Mouse IgG2a

Description

A mouse isotype control is an antibody of the same class (isotype) of immunoglobulin as the specific mouse antibody, but is either myeloma-derived antibody of unknown specificity, or is raised against an antigen that is presumed not to be present on or in the cells under study. Isotype control antibodies are used for the estimation of non-specific binding of target primary antibodies to cell surface antigens.

Product Info

Amount : 100 test
Purification : Affinity Chromatography
Content : 0.04mg/ml in PBS containing 0.05% Azide
Storage condition : Store mouse Isotype control at 4°C, stable for 6 months.

Application Note

FACS: 0.25-2 ul/10⁶ cells

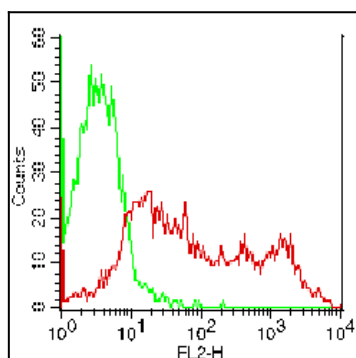


Fig:1- Cell surface FLOW analysis of hCD25 in PHA treated human PBMC using 5 ul /10⁶ cells. Green represents PE conjugated mouse IgG2a isotype control (10-102-P); red represents anti-hCD25 antibody (10-4125-P).