

10-3005-NALE: NALE™ Monoclonal Antibody to TLR8/CD288 (Clone: ABM15F6)

| | |
|--------------------------------|--|
| Clonality : | Monoclonal |
| Clone Name : | ABM15F6 |
| Application : | IHC,FACS |
| Reactivity : | Human |
| Gene : | TLR8 |
| Gene ID : | 51311 |
| Uniprot ID : | Q9NR97 |
| Format : | Azide Free,Purified |
| Alternative Name : | TLR8,UNQ249/PRO286 |
| Isotype : | Mouse IgG1 Kappa |
| Immunogen Information : | A partial length recombinant TLR8 protein (amino acids 750-900) was used as the immunogen for this antibody. |

Description

Toll like receptor 8, also known as CD288, is a member of TLR family. It plays an important role in sensing phagocytosed pathogen. TLR8 recognizes ssRNA and recruits MyD88 and leads to the activation of transcription factor NF-kappa B. TLR8 has two splice variants, viz., TLR8v1 and TLR8v2 and one missense variant, termed G or A1G allele of TLR8. TLR8v1 has additional 19 amino acids in the N-terminus. It is predominantly expressed in lung and peripheral blood leukocytes.

Product Info

| | |
|----------------------------|---|
| Amount : | 100 µg |
| Purification : | Protein G Chromatography |
| Content : | 25 µg in 50 µl/100 µg in 200 µl PBS containing 0.05% BSA. |
| Storage condition : | Store the antibody at 4°C, stable for 6 months. For long-term storage, store at -20°C. Avoid repeated freeze and thaw cycles. |

Application Note

Immunohistochemical analysis: 5 µg/ml;FACS analysis: 2 µg/10⁶ cells

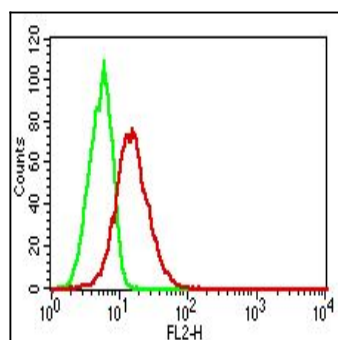


Fig-1: Intracellular flow analysis of hTLR8 in U937 using 2 µg/10⁶ cells of hTLR8 antibody (Clone: ABM15F6). Green represents isotype control; red represents anti-hTLR8 antibody. Goat anti-mouse PE conjugate was used as secondary.

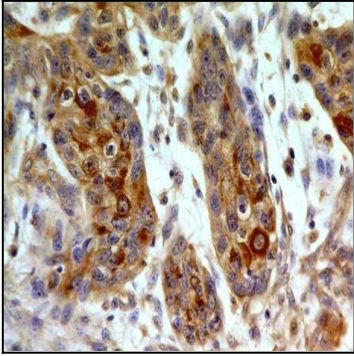


Fig-2: Immunohistochemical analysis of TLR8 in small cell carcinoma of esophagus using TLR8 antibody (Clone: ABM15F6) at 5 µg/ml.