

39-1008: Anti-Caldesmon(smooth) Monoclonal Antibody (Clone: hHCD)

Clonality :	Monoclonal
Clone Name :	hHCD
Application :	WB,IHC-P
Reactivity :	Human
Gene :	CALD1
Gene ID :	800
Uniprot ID :	Q05682
Alternative Name :	CAD, CDM
Isotype :	Mouse IgG1
Immunogen Information :	Human uterus smooth muscle extract.

Description

Caldesmon is a potential actomyosin regulatory protein found in smooth muscle and nonmuscle cells. The predicted smooth-muscle polypeptide is 793 amino acids long. The high molecular weight caldesmon(h-CaD) is predominantly expressed in smooth muscles, whereas the low molecular weight caldesmon(l-CaD) is widely distributed in nonmuscle tissues and cells. Hayashi et al.(1992) demonstrated that the human CDM gene is composed of 14 exons.

Product Info

Amount :	100 µg/vial
Purification :	Ascites
Content :	Each vial contains 50% glycerol, 1.2% Sodium acetate, 1% BSA, 0.02% NaN ₃ .
Storage condition :	At -20°C for one year, at 4°C for one month. Avoid repeated freezing and thawing.

Application Note

Western blot : 0.25-0.5 µg/ml; Immunohistochemistry(Paraffin-embedded Section) : 0.5-1 µg/ml

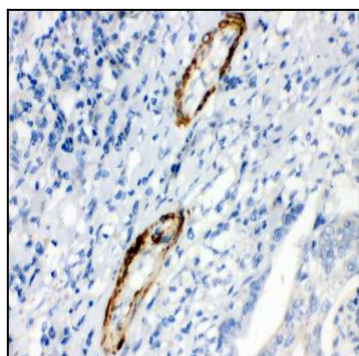


Figure 1: Anti-Caldesmon(smooth) antibody(39-1008). IHC(P): Human Intestinal Cancer Tissue.

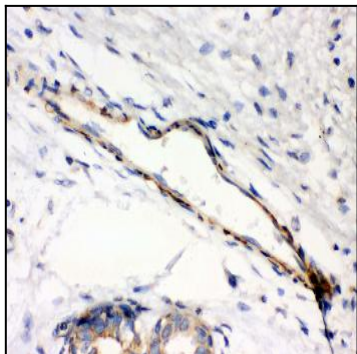


Figure 2: Anti-Caldesmon(smooth) antibody(39-1008) . IHC(P): Human Mammary Cancer Tissue.