

39-1011: Anti-Catenin gamma (Plakoglobin) Monoclonal Antibody (Clone: 15F11) (discontinued)

Clonality :	Monoclonal
Clone Name :	15F11
Application :	ICC,WB
Reactivity :	Human
Gene :	Jup
Gene ID :	81679
Uniprot ID :	Q6P0K8
Alternative Name :	Junction plakoglobin; Jup
Isotype :	Mouse IgG1
Immunogen Information :	Recombinant chicken plakoglobin.

Description

Junction Plakoglobin(JUP) ,also knows as catenin gamma, is a major cytoplasmic protein that occurs in a soluble and a membrane-associated form and is the only known constituent common to the submembranous plaques of both kinds of adhering junctions, the desmosomes and the intermediate junctions. It is a component of the cadherin-catenin complex, which is predominantly localized where actin filaments anchor in adherens junctions of epithelial cells. The human plakoglobin gene localizes on chromosome 17q21. Gamma-catenin is regulated by the APC tumor suppressor and its oncogenic activity is distinct from that of beta-catenin.

Product Info

Amount :	100 µg/vial
Purification :	Ascites
Content :	Mouse ascites fluid, 1.2% sodium acetate, 2mg BSA, with 0.01mg NaN ₃ as preservative. Reconstitute : Add 1ml of PBS buffer will yield a concentration of 100ug/ml.
Storage condition :	At -20°C for one year. After reconstitution, at 4°C for one month. It can also be aliquotted and stored frozen at -20°C for a longer time. Avoid repeated freezing and thawing.

Application Note

Western blot : 2¹/₄g/ml; Immunohistochemistry(Frozen Section) : 4¹/₄g/ml; Immunocytochemistry : 1¹/₄g/ml

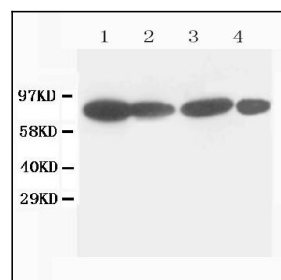


Figure 1: Anti-Catenin gamma(Plakoglobin) monoclonal antibody(39-1011). Western blotting: Lane 1: MCF-7 Cell Lysate, Lane 2: HELA Cell Lysate , Lane 3: MM231 Cell Lysate, Lane 4: HT1080 Cell Lysate.