

## 39-1012: Anti-Cathepsin D Monoclonal Antibody (Clone: CTD-19) (discontinued)

<b>Clonality :</b>	Monoclonal
<b>Clone Name :</b>	CTD-19
<b>Application :</b>	WB
<b>Reactivity :</b>	Human
<b>Gene :</b>	CTSD
<b>Gene ID :</b>	1509
<b>Uniprot ID :</b>	P07339
<b>Alternative Name :</b>	CPSD
<b>Isotype :</b>	Mouse IgG2a
<b>Immunogen Information :</b>	Human liver cathepsin D.

### Description

Cathepsin D is one of the lysosomal proteinases. It is ubiquitously expressed and is involved in proteolytic degradation, cell invasion, and apoptosis. Cathepsin D is mapped to chromosome 11. The amino acid sequence predicted from the cDNA sequence shows that human cathepsin D consists of 412 amino acids with 20 and 44 amino acids in a pre- and a prosegment, respectively.

### Product Info

<b>Amount :</b>	100 µg/vial
<b>Purification :</b>	Ascites
<b>Content :</b>	Mouse ascites fluid, 1.2% sodium acetate, 2mg BSA, with 0.01mg NaN3 as preservative. Reconstitute : Add 1ml of PBS buffer will yield a concentration of 100ug/ml.
<b>Storage condition :</b>	At -20°C for one year. After reconstitution, at 4°C for one month. It can also be aliquotted and stored frozen at -20°C for a longer time. Avoid repeated freezing and thawing.

### Application Note

Western blot : 0.5-1½µg/ml; Immunohistochemistry(Paraffin-embedded Section) : 1-2½µg/ml

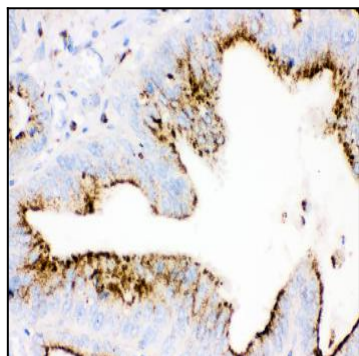


Figure 1: Anti-Cathepsin D antibody(39-1012). IHC(P): Human Intestinal Cancer Tissue.

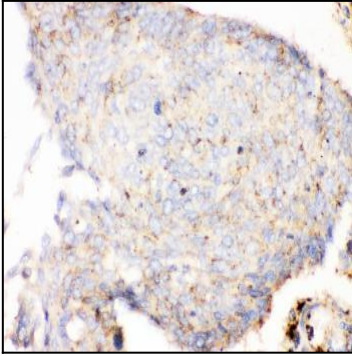


Figure 2: Anti-Cathepsin D antibody(39-1012). IHC(P): Human Lung Cancer Tissue.

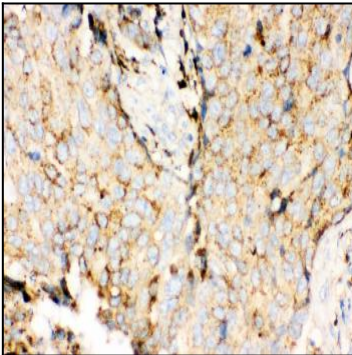


Figure 3: Anti-Cathepsin D antibody(39-1012). IHC(P): Human Mammary Cancer Tissue.