

## 39-1022: Anti-CEA Monoclonal Antibody (Clone: C6G9)

<b>Clonality :</b>	Monoclonal
<b>Clone Name :</b>	C6G9
<b>Application :</b>	WB
<b>Reactivity :</b>	Human
<b>Gene :</b>	Ceacam1
<b>Gene ID :</b>	81613
<b>Uniprot ID :</b>	P16573
<b>Alternative Name :</b>	Carcinoembryonic antigen-related cell adhesion molecule 1; ATP-dependent taurocolate-carrier protein; Cell-CAM 105; C-CAM 105; Ecto-ATPase; GP110; pp120; CD66a; Ceacam1
<b>Isotype :</b>	Mouse IgG1
<b>Immunogen Information :</b>	Carcinoembryonic antigen(CEA) isolated from a Human colon adenocarcinoma cell line.

### Description

Carcinoembryonic antigen is a complex immunoreactive glycoprotein with a molecular weight of 180,000 comprising 60% carbohydrate. It is found in adenocarcinomas of endodermally derived digestive system epithelia and in fetal colon. Carcinoembryonic antigen is one of the most widely used tumor markers in serum immunoassay determinations of carcinoma.

### Product Info

<b>Amount :</b>	100 µg/vial
<b>Purification :</b>	Ascites
<b>Content :</b>	Each vial contains 50% glycerol, 1.2% Sodium acetate, 1% BSA, 0.02% NaN <sub>3</sub> .
<b>Storage condition :</b>	At -20°C for one year, at 4°C for one month. Avoid repeated freezing and thawing.

### Application Note

Western blot : 0.5-1µg/ml; Immunohistochemistry(Paraffin-embedded Section) : 0.5-2µg/ml

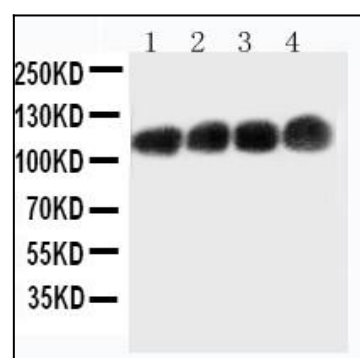


Figure 1: Anti-CEA monoclonal antibody(39-1022). Western blotting : Lane 1: Recombinant Human CEA Protein 10ng , Lane 2: Recombinant Human CEA Protein 5ng, Lane 3: Recombinant Human CEA Protein 2.

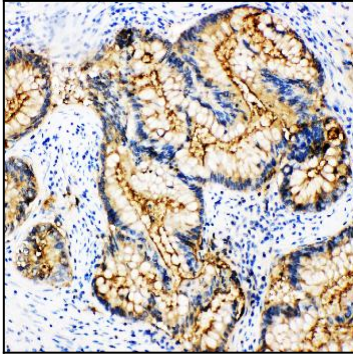


Figure 2: Anti-CEA monoclonal antibody(39-1022). IHC(P): Human Intestinal Cancer Tissue.

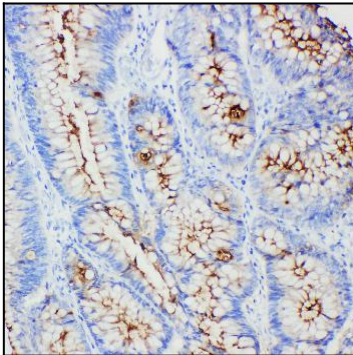


Figure 3: Anti-CEA monoclonal antibody(39-1022). IHC(P): Human Intestinal Cancer Tissue.

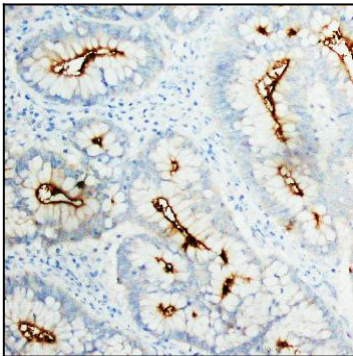


Figure 4: Anti-CEA monoclonal antibody(39-1022). IHC(P): Human Rectal Cancer Tissue.