

39-1028: Anti-Cyclin A Monoclonal Antibody (Clone: CY-A1)

Clonality :	Monoclonal
Clone Name :	CY-A1
Application :	ICC,WB
Reactivity :	Human
Gene :	CCNA2
Gene ID :	281667
Uniprot ID :	P30274
Alternative Name :	Cyclin-A2; Cyclin-A; Ccna2; Ccna, Cyca
Isotype :	Mouse IgG2a
Immunogen Information :	Recombinant Bovine cyclin A.

Description

The mammalian A-type cyclin family consists of 2 members, cyclin A1(CCNA1) and cyclin A2(CCNA2). Human cyclin A gene is assigned to 4q26-q27. Cyclin A protein is synthesized and localized into the nucleus at the onset of S phase in nontransformed mammalian fibroblasts.

Product Info

Amount :	100 µg/vial
Purification :	Ascites
Content :	Mouse ascites fluid, 1.2% sodium acetate, 2mg BSA, with 0.01mg Na ₃ N as preservative. Reconstitute : Add 1ml of PBS buffer will yield a concentration of 100ug/ml.
Storage condition :	At -20°C for one year. After reconstitution, at 4°C for one month. It can also be aliquotted and stored frozen at -20°C for a longer time. Avoid repeated freezing and thawing.

Application Note

Western blot : 0.5-1½µg/ml; Immunocytochemistry : 1½µg/ml

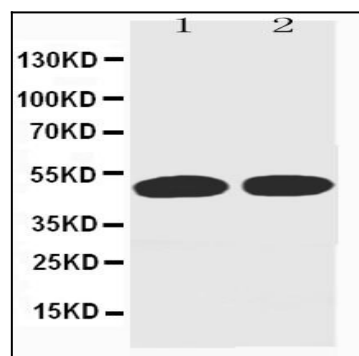


Figure 1: Anti-Cyclin A monoclonal antibody(39-1028). Western blotting: Lane 1: Hela Cell Lysate, Lane 2: Jurkat Cell Lysate.

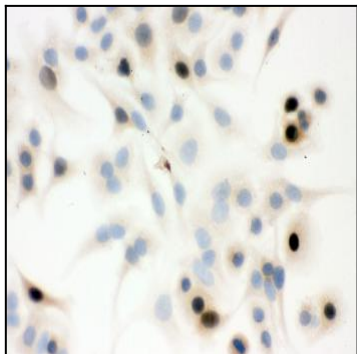


Figure 2: Anti-Cyclin A monoclonal antibody(39-1028). ICC: A549 Cell.

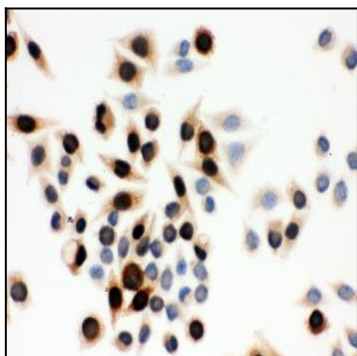


Figure 3: Anti-Cyclin A monoclonal antibody(39-1028). ICC: SMMC-7721 Cell.