

39-1029: Anti-Cyclin D1 Monoclonal Antibody (Clone: DCS-6)(Discontinued)

Clonality :	Monoclonal
Clone Name :	DCS-6
Application :	WB,IHC-P,IHC-F,ICC
Reactivity :	Human
Gene :	Ccnd1
Gene ID :	58919
Uniprot ID :	P39948
Alternative Name :	G1/S-specific cyclin-D1; Ccnd1
Isotype :	Mouse IgG2a
Immunogen Information :	Recombinant Human cyclin D1 protein.

Description

D-type cyclins(cyclins D1, D2, and D3) are regarded as essential links between cell environment and the core cell cycle machinery. CyclinD1(CCND1), also known as BCL1. Expression of cyclin D1, but not of cyclins A and E, was induced by transfection of the RB gene into RB-deficient tumor cells. CCND1 gene to 11q13. cyclin D1 gene can function as an oncogene. Cyclin D1 expression is regulated by the retinoblastoma protein.

Product Info

Amount :	100 µg/vial
Purification :	Ascites
Content :	Mouse ascites fluid, 1.2% sodium acetate, 2mg BSA, with 0.01mg NaN ₃ as preservative. Reconstitute : Add 1ml of PBS buffer will yield a concentration of 100ug/ml.
Storage condition :	At -20°C for one year. After reconstitution, at 4°C for one month. It can also be aliquotted and stored frozen at -20°C for a longer time. Avoid repeated freezing and thawing.

Application Note

Western blot : 4Å¼g/ml; Immunohistochemistry(Paraffin-embedded Section) : 8Å¼g/ml; Immunohistochemistry(Frozen Section) : 8Å¼g/ml; Immunocytochemistry : 1Å¼g/ml

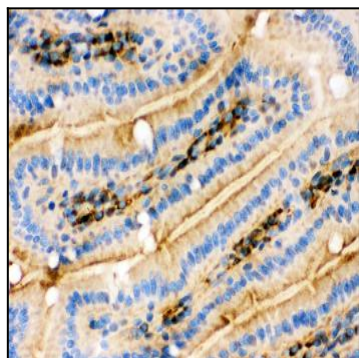


Figure 1: Anti-Cyclin D1 antibody(39-1029). IHC(F): Mouse Intestine Tissue.

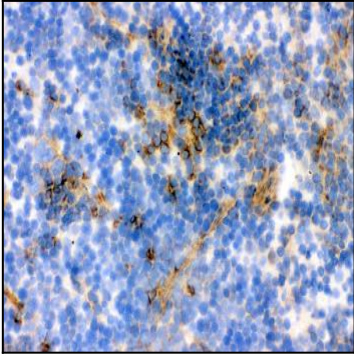


Figure 2: Anti-Cyclin D1 antibody(39-1029). IHC(F): Mouse Spleen Tissue.

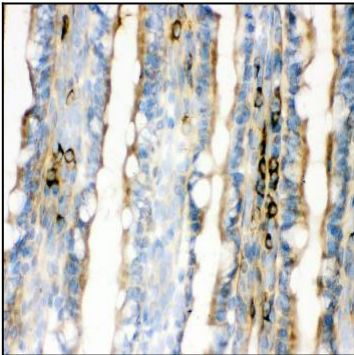


Figure 3: Anti-Cyclin D1 antibody(39-1029). IHC(F): Rat Intestine Tissue.

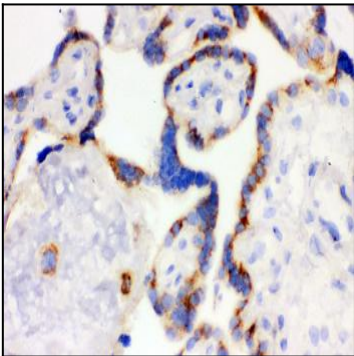


Figure 4: Anti-Cyclin D1 antibody(39-1029). IHC(F): Human Placenta Tissue.