

39-1038: Anti-Gelsolin Monoclonal Antibody (Clone: GS-2C4)

Clonality :	Monoclonal
Clone Name :	GS-2C4
Application :	WB,IHC-P,IHC-F
Reactivity :	Human
Gene :	Gsn
Gene ID :	296654
Uniprot ID :	Q68FP1
Alternative Name :	Gelsolin; Actin-depolymerizing factor; ADF; Brevin; Gsn
Isotype :	Mouse IgG1
Immunogen Information :	Human plasma gelsolin.

Description

Gelsolin, a protein of leukocytes, platelets, and other cells, severs actin filaments in the presence of submicromolar calcium, thereby solating cytoplasmic actin gels. A gelsolin variant with 23 more N-terminal amino acids is a plasma component probably involved in the clearance of actin, the most abundant human protein, from the circulation. Gelsolin is located in 9q34. Plasma and cytoplasmic gelsolins are encoded by a single gene and contain a duplicated actin-binding domain.

Product Info

Amount :	100 µg/vial
Purification :	Ascites
Content :	Mouse ascites fluid, 1.2% sodium acetate, 2mg BSA, with 0.01mg NaN ₃ as preservative. Reconstitute : Add 1ml of PBS buffer will yield a concentration of 100ug/ml.
Storage condition :	At -20°C for one year. After reconstitution, at 4°C for one month. It can also be aliquotted and stored frozen at -20°C for a longer time. Avoid repeated freezing and thawing.

Application Note

Western blot : 0.5-1 µg/ml; Immunohistochemistry(Paraffin-embedded Section) : 1-2 µg/ml;
Immunohistochemistry(Frozen Section) : 1-2 µg/ml

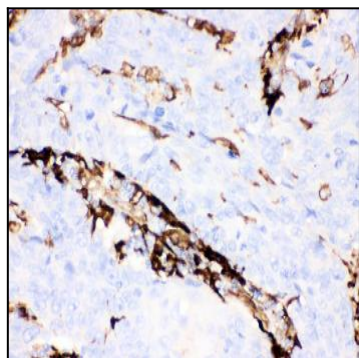


Figure 1: Anti-Gelsolin monoclonal antibody(39-1038). IHC(P): Human Lung Cancer Tissue.

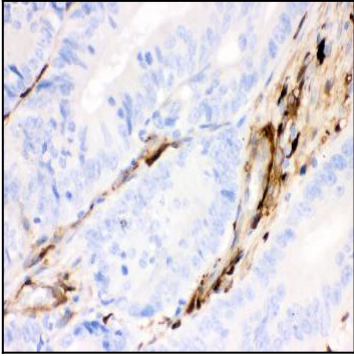


Figure 2: Anti-Gelsolin monoclonal antibody(39-1038). IHC(P): Human Intestinal Cancer Tissue.