

39-1048: Anti-MAP2 Monoclonal Antibody (Clone: HM-2)

Clonality :	Monoclonal
Clone Name :	HM-2
Application :	WB
Reactivity :	Human
Gene :	Map2
Gene ID :	25595
Uniprot ID :	P15146
Alternative Name :	Microtubule-associated protein 2; MAP-2; Map2; Mtap2
Isotype :	Mouse IgG1
Immunogen Information :	Rat brain microtubule-associated proteins(MAPs).

Description

MAP2, a 280-kD protein, is highly concentrated in neuronal somata and dendrites. Microtubule-associated protein 2(MAP2)is a neurosteroid receptor. MAP2 gene contains 19 exons, and located in segment 2q34-q35. The transgenic MAP2c was present in dendrites but not in axons but transgenic MAP2c messenger RNA was limited to cell bodies.

Product Info

Amount :	100 µg/vial
Purification :	Ascites
Content :	Mouse ascites fluid, 1.2% sodium acetate, 2mg BSA, with 0.01mg NaN ₃ as preservative. Reconstitute : Add 1ml of PBS buffer will yield a concentration of 100ug/ml.
Storage condition :	At -20°C for one year. After reconstitution, at 4°C for one month. It can also be aliquotted and stored frozen at -20°C for a longer time. Avoid repeated freezing and thawing.

Application Note

Western blot : 0.5-2½µg/ml; Immunohistochemistry(Paraffin-embedded Section) : 1-2½µg/ml

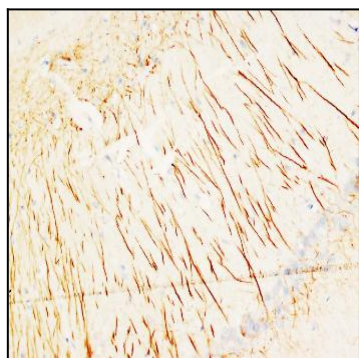


Figure 1: Anti-MAP2 monoclonal antibody(39-1048). IHC(P): Rat Brain Tissue.