

39-1059: Anti-beta-HCG Monoclonal Antibody (Clone: PC-2)

Clonality :	Monoclonal
Clone Name :	PC-2
Application :	IHC-P
Reactivity :	Human
Gene :	CGB3
Gene ID :	1082
Uniprot ID :	P0DN86
Alternative Name :	Choriogonadotropin subunit beta; CG-beta; Chorionic gonadotropin chain beta; CGB; CGB3; CGB5; CGB7; CGB8
Isotype :	Mouse IgG1
Immunogen Information :	Purified human Chorionic Gonadotropin.

Description

beta-HCG(beta-Human Chorionic Gonadotropin), also termed as Chorionic Gonadotropin, Beta Chain(CGB). It is encoded by a multigene cluster composed of six homologous sequences. And in the family of beta-containing glycoprotein hormones, beta-HCG is unique in that it contains an extension of 29 amino acids at its COOH end. beta-HCG is mapped to 19q13.32 and expressed in trophoblast and various malignant tumors promotes cellular motility in vivo. beta-HCG has a novel function in uterine adaptation to early pregnancy as well as in tumor development and underline the importance of HCG as an as yet unrecognized angiogenic factor.

Product Info

Amount :	100 µg/vial
Purification :	Ascites
Content :	Mouse ascites fluid, 1.2% sodium acetate, 2mg BSA, with 0.01mg NaN ₃ as preservative. Reconstitute : Add 1ml of PBS buffer will yield a concentration of 100ug/ml.
Storage condition :	At -20°C for one year. After reconstitution, at 4°C for one month. It can also be aliquotted and stored frozen at -20°C for a longer time. Avoid repeated freezing and thawing.

Application Note

Immunohistochemistry(Paraffin-embedded Section) : 2¹/₄g/ml

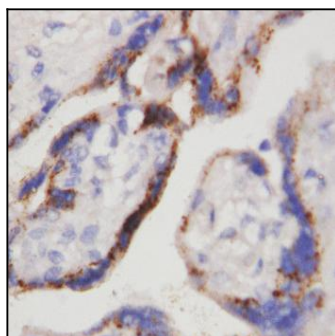


Figure 1: Anti-beta-HCG antibody(monoclonal) 39-1059. IHC(P): Human Placenta Tissue.