

39-1063: Monoclonal Antibody to Anti-Involucrin Antibody(Clone: SY5)

Clonality :	Monoclonal
Clone Name :	SY5
Application :	ICC,WB
Reactivity :	Human
Gene :	Ivl
Gene ID :	60583
Uniprot ID :	P48998
Alternative Name :	Involucrin; Ivl
Isotype :	Mouse IgG1
Immunogen Information :	Human involucrin.

Description

Involucrin is a keratinocyte protein that first appears in the cell cytosol, but ultimately becomes cross-linked to membrane proteins by transglutaminase. The gene consists of 585 amino acids, 390 of which form a central decapeptide repeat, rich in glutamine and glutamic acid. The involucrin gene, encoding a protein of the terminally differentiated keratinocyte, is polymorphic in the human. Involucrin has previously been mapped to chromosome 1q21. The epidermal protein involucrin has been remodeled in the higher primates. And the existence of two populations of East Asian involucrin alleles gives support for the existence of a Eurasian stem lineage from which Caucasians and a part of the Asian population originated.

Product Info

Amount :	100 µg/vial
Purification :	Ascites
Content :	Mouse ascites fluid, 1.2% sodium acetate, 2mg BSA, with 0.01mg NaN ₃ as preservative. Reconstitute : Add 1ml of PBS buffer will yield a concentration of 100ug/ml.
Storage condition :	At -20°C for one year. After reconstitution, at 4°C for one month. It can also be aliquotted and stored frozen at -20°C for a longer time. Avoid repeated freezing and thawing.

Application Note

Western blot : 2½µg/ml; Immunohistochemistry(Paraffin-embedded Section) : 0.4-1½µg/ml; Immunohistochemistry(Frozen Section) : 0.4-1½µg/ml; Immunocytochemistry : 1½µg/ml

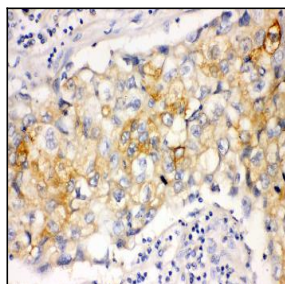


Figure 1: Anti-Involucrin antibody(39-1063). IHC(P): Human Lung Cancer Tissue.