

### 39-1069: Anti-Myosin (Skeletal, Fast) Monoclonal Antibody (Clone: MY-32)

<b>Clonality :</b>	Monoclonal
<b>Clone Name :</b>	MY-32
<b>Application :</b>	WB,IHC-P
<b>Reactivity :</b>	Human
<b>Gene :</b>	Myh2
<b>Uniprot ID :</b>	I6L963
<b>Alternative Name :</b>	Myh2 protein ; Myh2
<b>Isotype :</b>	Mouse IgG1
<b>Immunogen Information :</b>	Rabbit muscle myosin.

#### Description

Myosin is composed of 2 heavy chains of about 200,000 daltons each and 4 light chains of about 20,000 daltons each. The light chains are of 2 distinct types: the phosphorylatable, regulatory, or MLC2 type, and the nonphosphorylatable, alkali, or MLC1 and MLC3 types(MYL1 according to the HGM symbols). Skeletal Myosin(Fast),, also known as MYL1, mapped to the region 2q32.1-qter.

#### Product Info

<b>Amount :</b>	100 µg/vial
<b>Purification :</b>	Ascites
<b>Content :</b>	Mouse ascites fluid, 1.2% sodium acetate, 2mg BSA, with 0.01mg NaN <sub>3</sub> as preservative. Reconstitute : Add 1ml of PBS buffer will yield a concentration of 100ug/ml.
<b>Storage condition :</b>	At -20°C for one year. After reconstitution, at 4°C for one month. It can also be aliquotted and stored frozen at -20°C for a longer time. Avoid repeated freezing and thawing.

#### Application Note

Western blot : 1-2½g/ml; Immunohistochemistry(Paraffin-embedded Section) : 1.5-2½g/ml

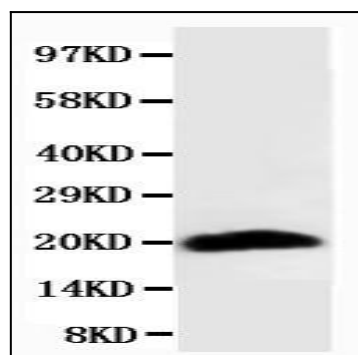


Figure 1: Anti-Myosin(Skeletal, Fast) antibody(monoclonal) 39-1069. Western blotting: Rat Skeletal Muscle Tissue Lysate.