

## 39-1083: Anti-Paxillin Monoclonal Antibody (Clone: PXC-10)

<b>Clonality :</b>	Monoclonal
<b>Clone Name :</b>	PXC-10
<b>Application :</b>	WB, ICC
<b>Reactivity :</b>	Human
<b>Gene :</b>	PXN
<b>Gene ID :</b>	5829
<b>Uniprot ID :</b>	P49023
<b>Alternative Name :</b>	Paxillin; Pxn
<b>Isotype :</b>	Mouse IgG1
<b>Immunogen Information :</b>	C-terminal part of recombinant chicken paxillin (amino acids 305-559).

### Description

The paxillin gene can be alternatively spliced to include 1 of 2 alternative exons, generating beta and gamma isoforms. Paxillin is a 68-kDa focal adhesion protein that is phosphorylated on tyrosine residues in fibroblasts in response to transformation by v-src, treatment with platelet-derived growth factor, or cross-linking of integrins. The 68-kD protein(paxillin) is a cytoskeletal component that localizes to the focal adhesions at the ends of actin stress fibers in chicken embryo fibroblasts. It is also present in the focal adhesions of Madin-Darby bovine kidney(MDBK) epithelial cells but is absent, like talin, from the cell-cell adherens junctions of these cells.

### Product Info

<b>Amount :</b>	100 µg/vial
<b>Purification :</b>	Ascites
<b>Content :</b>	Mouse ascites fluid, 1.2% sodium acetate, 2mg BSA, with 0.01mg NaN <sub>3</sub> as preservative. Reconstitute : Add 1ml of PBS buffer will yield a concentration of 100ug/ml.
<b>Storage condition :</b>	At -20°C for one year. After reconstitution, at 4°C for one month. It can also be aliquotted and stored frozen at -20°C for a longer time. Avoid repeated freezing and thawing.

### Application Note

Western blot : 1-2 µg/ml; Immunocytochemistry : 1 µg/ml

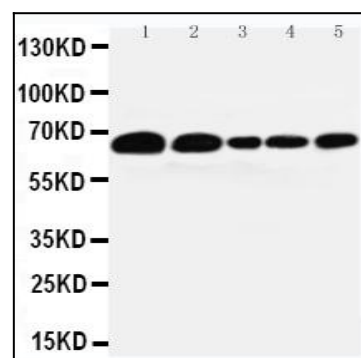


Figure 1: Anti-Paxillin antibody(monoclonal) 39-1083 . Western blotting: Lane 1: 293T Cell Lysate, Lane 2: HELA Cell Lysate, Lane 3: MCF-7 Cell Lysate, Lane 4: MM231 Cell Lysate, Lane 5: JURKAT Cell Lysate.