

## 39-1084: Anti-PCK Monoclonal Antibody (Clone: C-11+PCK-26+CY-90+KS-1A3+M20+A53-B/A2)

<b>Clonality :</b>	Monoclonal
<b>Clone Name :</b>	C-11+PCK-26+CY-90+KS-1A3+M20+A53-B/A2
<b>Application :</b>	WB,IHC-P,IHC-F
<b>Reactivity :</b>	Human
<b>Isotype :</b>	Mouse IgG2a/ IgG1
<b>Immunogen Information :</b>	mixture of several monoclonal cytokeratin clones.

### Description

Monoclonal anti cytokeratins are specific markers of epithelial cell differentiation and have been widely used as tools in tumor identification and classification. Monoclonal Anti Pan Cytokeratin(mixture) is a broadly reactive reagent, which recognizes epitopes present in most human epithelial tissues.

### Product Info

<b>Amount :</b>	100 µg/vial
<b>Purification :</b>	Ascites
<b>Content :</b>	Mouse ascites fluid, 1.2% sodium acetate, 2mg BSA, with 0.01mg NaN <sub>3</sub> as preservative. Reconstitute : Add 1ml of PBS buffer will yield a concentration of 100ug/ml.
<b>Storage condition :</b>	At -20°C for one year. After reconstitution, at 4°C for one month. It can also be aliquotted and stored frozen at -20°C for a longer time. Avoid repeated freezing and thawing.

### Application Note

Western blot : 1-2 µg/ml; Immunohistochemistry(Paraffin-embedded Section) : 0.1-0.5 µg/ml;  
Immunohistochemistry(Frozen Section) : 0.1-0.5 µg/ml

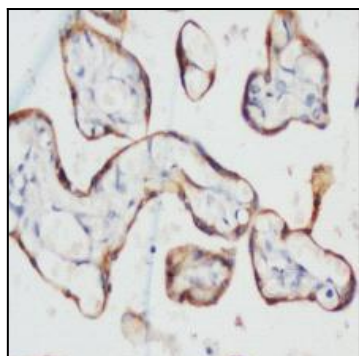


Figure 1: Anti-PCK antibody(monoclonal) 39-1084. IHC(P): Human Placenta Tissue.