

39-1087: Monoclonal Antibody to Anti-Phosphoserine Antibody(Clone: PSR-45)(Discontinued)

| | |
|--------------------------------|---|
| Clonality : | Monoclonal |
| Clone Name : | PSR-45 |
| Application : | WB |
| Reactivity : | Human |
| Gene : | Psph |
| Gene ID : | 304429 |
| Uniprot ID : | Q5M819 |
| Alternative Name : | Phosphoserine phosphatase; PSP; PSPase; 3.1.3.3; O-phosphoserine phosphohydrolase; Psph |
| Isotype : | Mouse IgG1 |
| Immunogen Information : | Phosphoserine conjugated to Keyhole Limpet Hemocyanin(KLH). |

Description

Phosphoserine phosphatase fills an important role in the biosynthesis of serine from carbohydrates by catalyzing the last step, hydrolysis of O-phosphoserine. Phosphoserine phosphatase activity in lymphoblasts and fibroblasts was reduced to 25% of normal values. The human phosphoserine gene(PSP)is mapped to the pter-q22 region of chromosome 7.

Product Info

| | |
|----------------------------|--|
| Amount : | 100 µg/vial |
| Purification : | Ascites |
| Content : | Mouse ascites fluid, 1.2% sodium acetate, 2mg BSA, with 0.01mg NaN ₃ as preservative. Reconstitute : Add 1ml of PBS buffer will yield a concentration of 100ug/ml. |
| Storage condition : | At -20°C for one year. After reconstitution, at 4°C for one month. It can also be aliquotted and stored frozen at -20°C for a longer time. Avoid repeated freezing and thawing. |

Application Note

Western blot : 1-2µg/ml;

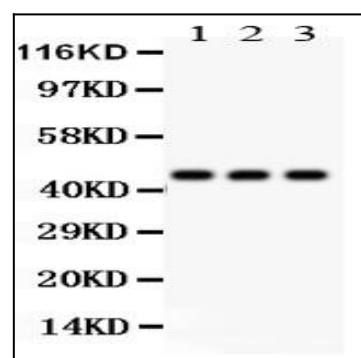


Figure 1: Anti-Phosphoserine antibody(monoclonal) 39-1087. Western blotting:
Lanes: Anti Phosphoserine(39-1087) at 0.5ug/ml, Lane 1: Rat Kidney Tissue Lysate at 50ug, Lane 2: HELA Whole Cell Lysate at 40ug, Lane 3: MCF-7 Whole Cell Lysate at 40ug. Predicted band size: 45 kDa. Observed band size: 45 kDa.