

39-1091: Anti-Synaptophysin Monoclonal Antibody (Clone: SVP-38)

Clonality :	Monoclonal
Clone Name :	SVP-38
Application :	WB,IHC-P,IHC-F
Reactivity :	Human
Gene :	Syp
Gene ID :	24804
Uniprot ID :	P07825
Alternative Name :	Synaptophysin; Major synaptic vesicle protein p38; Syp
Isotype :	Mouse IgG1
Immunogen Information :	Rat retina synaptosome.

Description

Synaptophysin(SYP) is an integral membrane protein of small synaptic vesicles in brain and endocrine cells. Ozcelik et al.(1990) concluded that the gene has 7 exons distributed over about 20 kb. SYP mapped the SYP locus to Xp11.23-p11.22. Regionalization of the gene on the X chromosome was also done with hamster/human hybrid cells in which various portions of the human X chromosome were present.

Product Info

Amount :	100 µg/vial
Purification :	Ascites
Content :	Mouse ascites fluid, 1.2% sodium acetate, 2mg BSA, with 0.01mg NaN ₃ as preservative. Reconstitute : Add 1ml of PBS buffer will yield a concentration of 100ug/ml.
Storage condition :	At -20°C for one year. After reconstitution, at 4°C for one month. It can also be aliquotted and stored frozen at -20°C for a longer time. Avoid repeated freezing and thawing.

Application Note

Western blot : 0.5-1 µg/ml; Immunohistochemistry(Paraffin-embedded Section) : 1-2 µg/ml;
Immunohistochemistry(Frozen Section) : 1-2 µg/ml

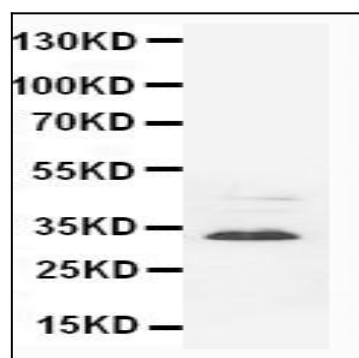


Figure 1: Anti-Synaptophysin antibody(monoclonal) 39-1091. Western blotting: Rat Brain Tissue Lysate.

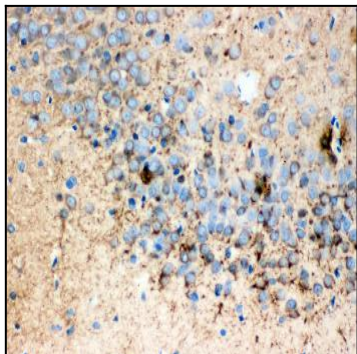


Figure 2: Anti-Synaptophysin antibody(monoclonal) 39-1091. IHC(P): Rat Brain Tissue.

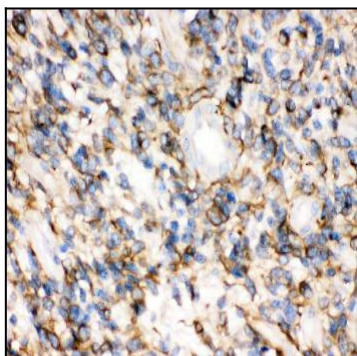


Figure 3: Anti-Synaptophysin antibody(monoclonal)39-1091. IHC(P): Human Glioma Tissue.

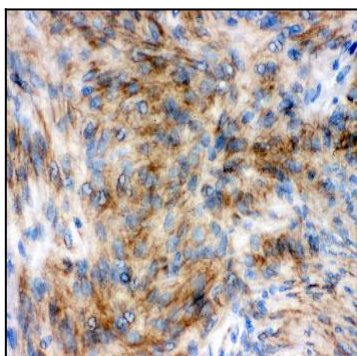


Figure 4: Anti-Synaptophysin antibody(monoclonal)39-1091. IHC(P): Human meningeoma Tissue.