

## 39-2010: Anti-PTOV1 Polyclonal Antibody

<b>Clonality :</b>	Polyclonal
<b>Application :</b>	WB
<b>Reactivity :</b>	Rat
<b>Gene :</b>	PTOV1
<b>Gene ID :</b>	53635
<b>Uniprot ID :</b>	Q86YD1
<b>Format :</b>	Lyophilized
<b>Alternative Name :</b>	Prostate tumor-overexpressed gene 1 protein; PTOV-1; Activator interaction domain-containing protein 2; PTOV1; ACID2; PP642, UNQ6127/PRO20092
<b>Isotype :</b>	Rabbit IgG
<b>Immunogen Information :</b>	A synthetic peptide corresponding to a sequence at the C-terminus of human PTOV1 (385-414aa NFVNGIRRVIANQQQVLQRNLEQQQGRGM), different from the related mouse and rat sequences by one amino acid.

## Description

Prostate tumor overexpressed gene 1 protein is a protein that in humans is encoded by the PTOV1 gene. It is mapped to 19q13.33. This gene encodes a protein that was found to be overexpressed in prostate adenocarcinomas. The encoded protein was found to interact with the lipid raft protein flotillin-1 and shuttle it from the cytoplasm to the nucleus in a cell cycle dependent manner. Alternative splicing of this gene results in multiple transcript variants.

## Product Info

<b>Amount :</b>	100 µg/vial
<b>Purification :</b>	Immunogen affinity purified.
<b>Content :</b>	Each vial contains 5mg BSA, 0.9mg NaCl, 0.2mg Na2HPO4, 0.05mg NaN3. Reconstitute : Add 0.2ml of distilled water will yield a concentration of 500ug/ml.
<b>Storage condition :</b>	At -20°C for one year. After reconstitution, at 4°C for one month. It can also be aliquotted and stored frozen at -20°C for a longer time. Avoid repeated freezing and thawing.

## Application Note

Western blot : 0.1-0.5 µg/ml

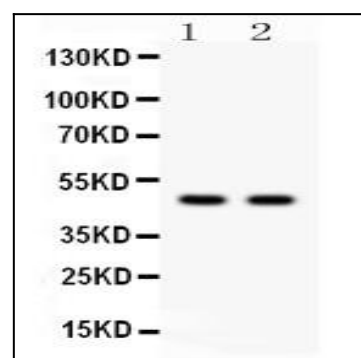


Figure 1: Anti-PTOV1 antibody(39-2010). Western blotting: Lanes: Anti PTOV1(39-2010) at 0.5ug/ml. Lane 1: Rat Brain Tissue Lysate at 50ug, Lane 2: Rat Kidney Tissue Lysate at 50ug. Predicted band size: 47 kDa. Observed band size: 47 kDa.