

39-2017: Anti-Annexin A1 Polyclonal Antibody

Clonality :	Polyclonal
Application :	WB
Reactivity :	Human
Gene :	ANXA1
Gene ID :	301
Uniprot ID :	P04083
Alternative Name :	Annexin A1; Annexin I; Annexin-1; Calpactin II; Calpactin-2; Chromobindin-9; Lipocortin I; Phospholipase A2 inhibitory protein; p35; ANXA1; ANX1, LPC1
Isotype :	Rabbit IgG
Immunogen Information :	A synthetic peptide corresponding to a sequence at the N-terminus of Human Annexin A1(3-24aa MVSEFLKQAWFIENEEQEYVQT).

Description

Annexin I, also known as lipocortin I(Lipo1), belongs to the family of annexins. These proteins are though to control the biosynthesis of the potent mediators of inflammation, prostaglandins and leukotrienes. In two lipocortins(I and II) a short amino-terminal sequence distinct from the core structure has potential regulatory functions which are dependent on its phosphorylation state. The gene in the mouse encodes a protein of 346 amino acid residues. Mouse Lipo1 gene spans about 17 kb and is divided into 13 exons. Annexin I gene, mapped to 9q11-q22, is located on mouse chromosome 19. Annexin I acts through the formyl peptide receptor on human neutrophils. Peptides derived from the unique N-terminal domain of annexin I serve as FPR ligands and trigger different signaling pathways in a dose-dependent manner.

Product Info

Amount :	100 µg/vial
Purification :	Immunogen affinity purified.
Content :	Each vial contains 5mg BSA, 0.9mg NaCl, 0.2mg Na ₂ HPO ₄ , 0.05mg Thimerosal, 0.05mg Na ₃ . Reconstitute : Add 0.2ml of distilled water will yield a concentration of 500ug/ml.
Storage condition :	At -20°C for one year. After reconstitution, at 4°C for one month. It can also be aliquotted and stored frozen at -20°C for a longer time. Avoid repeated freezing and thawing.

Application Note

Western blot : 0.1-0.5µg/ml; Immunohistochemistry(Paraffin-embedded Section) : 0.5-1µg/ml

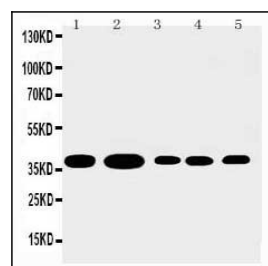


Figure 1: Anti-Annexin A1 antibody(39-2017). Western blotting: Lane 1: U87 Cell Lysate, Lane 2: HELA Cell Lysate, Lane 3: PANC Cell Lysate, Lane 4: COLO320 Cell Lysate, Lane 5: SMMC Cell Lysate.

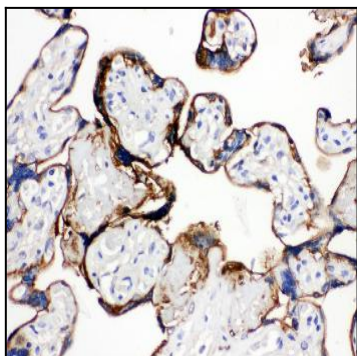


Figure 2: Anti-Annexin A1 antibody(39-2017). IHC(P): Human Placenta Tissue.

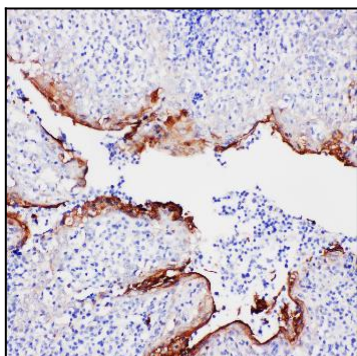


Figure 3: Anti-Annexin A1 antibody(39-2017). IHC(P): Human Tonsil Tissue.