

39-2021: Anti-Apoptosis inhibitor 5 Polyclonal Antibody

Clonality :	Polyclonal
Application :	WB,IHC-P,IHC-F,ICC
Reactivity :	Human, Mouse, Rat
Gene :	API5
Gene ID :	8539
Uniprot ID :	Q9BZZ5
Format :	Lyophilized
Alternative Name :	Apoptosis inhibitor 5; API-5; Antiapoptosis clone 11 protein; AAC-11; Cell migration-inducing gene 8 protein; Fibroblast growth factor 2-interacting factor; FIF; Protein XAGL; API5; MIG8
Isotype :	Rabbit IgG
Immunogen Information :	A synthetic peptide corresponding to a sequence at the C-terminus of Human Apoptosis inhibitor 5(487-504aa KYSSNLGNFNYERSLQGK)(b), different from the related Mouse sequence by one amino acid.

Description

Many growth factors and cytokines act as cellular survival factors by preventing programmed cell death(apoptosis). Apoptosis inhibitor 5(API5) is an antiapoptotic factor which may have a role in protein assembly. The API5 gene to chromosome 11p12 based on an alignment of the API5 sequence with the genomic sequence It is a critical determinant of E2F1-induced apoptosis, acting downstream of E2F to suppress E2F-dependent apoptosis without generally blocking E2F-dependent transcription.

Product Info

Amount :	100 µg/vial
Purification :	Immunogen affinity purified.
Content :	Each vial contains 5mg BSA, 0.9mg NaCl, 0.2mg Na2HPO4, 0.05mg Thimerosal, 0.05mg NaN3. Reconstitute : Add 0.2ml of distilled water will yield a concentration of 500ug/ml.
Storage condition :	At -20°C for one year. After reconstitution, at 4°C for one month. It can also be aliquotted and stored frozen at -20°C for a longer time. Avoid repeated freezing and thawing.

Application Note

Western blot: 0.1-0.5 µg/ml; Immunohistochemistry(Paraffin-embedded Section): 0.5-1 µg/ml;
Immunohistochemistry(Frozen Section): 0.5-1 µg/ml; Immunocytochemistry: 0.5-1 µg/ml

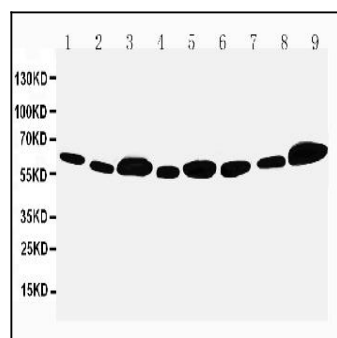


Figure 1: Anti-Apoptosis inhibitor 5 antibody(39-2021). Western blotting: Lane 1: Rat Cardiac Muscle Tissue Lysate, Lane 2: Rat Brain Tissue Lysate, Lane 3: Rat Testis Tissue Lysate, Lane 4: Rat Placenta Tissue Lysate, Lane 5: MCF-7 Cell Lysate, Lane 6: HELA Cell Lysate, Lane 7: CEM Cell Lysate, Lane 8: SMMC Cell Lysate, Lane 9: COLO320 Cell Lysate.

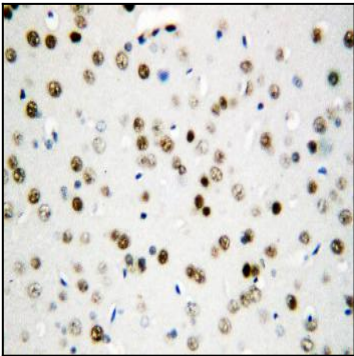


Figure 2: Anti-Apoptosis inhibitor 5 antibody(39-2021). IHC(P): Rat Brain Tissue.

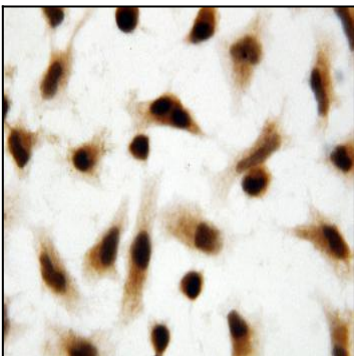


Figure 3: Anti-Apoptosis inhibitor 5 antibody(39-2021). ICC: HELA Cell.

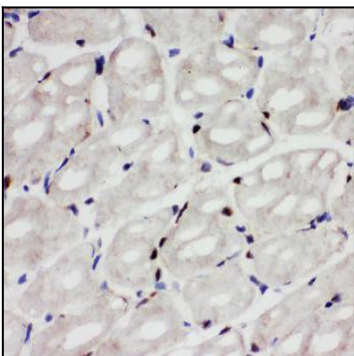


Figure 4: Anti-Apoptosis inhibitor 5 antibody(39-2021). IHC(F): Rat Cardiac Muscle Tissue.