

### 39-2024: Polyclonal Antibody to Anti-ATF6 Antibody(Discontinued)

<b>Clonality :</b>	Polyclonal
<b>Application :</b>	WB
<b>Reactivity :</b>	Human
<b>Gene :</b>	ATF6
<b>Gene ID :</b>	22926
<b>Uniprot ID :</b>	P18850
<b>Alternative Name :</b>	Cyclic AMP-dependent transcription factor ATF-6 alpha; cAMP-dependent transcription factor ATF-6 alpha; Activating transcription factor 6 alpha; ATF6-alpha
<b>Isotype :</b>	Rabbit IgG
<b>Immunogen Information :</b>	A synthetic peptide corresponding to a sequence at the C-terminus of human ATF6(599-614aa NINENVINGQDYEVMM), different from the related mouse and rat sequences by one amino acid.

#### Description

ATF6, a member of the leucine zipper protein family, is an endoplasmic reticulum(ER) stress-regulated transmembrane transcription factor that activates the transcription of ER molecules. ATF6 gene is mapped to chromosome 1q23.3. ATF6 can constitutively induce the promoter of glucose-regulated protein(grp) genes through activation of the endoplasmic reticulum(ER) stress element(ERSE).

#### Product Info

<b>Amount :</b>	100 µg/vial
<b>Purification :</b>	Immunogen affinity purified.
<b>Content :</b>	Each vial contains 5mg BSA, 0.9mg NaCl, 0.2mg Na <sub>2</sub> HPO <sub>4</sub> , 0.05mg Thimerosal, 0.05mg NaN <sub>3</sub> . Reconstitute : Add 0.2ml of distilled water will yield a concentration of 500ug/ml.
<b>Storage condition :</b>	At -20°C for one year. After reconstitution, at 4°C for one month. It can also be aliquotted and stored frozen at -20°C for a longer time. Avoid repeated freezing and thawing.

#### Application Note

Western blot : 0.1-0.5µg/ml

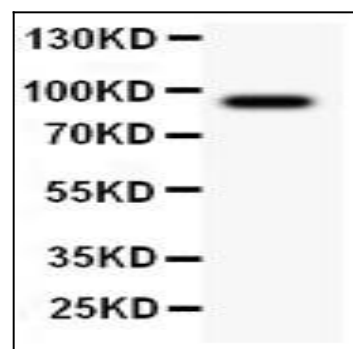


Figure 1: Anti-ATF6 antibody(39-2024). Western blotting: Lanes: Anti ATF6(39-2024) at 0.5ug/ml, WB: A549 Whole Cell Lysate at 40ug. Predicted band size: 75 kDa. Observed band size: 90 kDa.