

39-2025: Polyclonal Antibody to Anti-ATP5J Antibody(Discontinued)

Clonality :	Polyclonal
Application :	WB
Reactivity :	Human
Gene :	ATP5PF
Gene ID :	522
Uniprot ID :	P18859
Alternative Name :	ATP synthase-coupling factor 6, mitochondrial; ATPase subunit F6; ATP5J, ATP5A, ATPM
Isotype :	Rabbit IgG
Immunogen Information :	A synthetic peptide corresponding to a sequence in the middle region of human ATP5J(CF6), different from the related mouse sequence by two amino acids.

Description

ATP synthase, H⁺ transporting, mitochondrial F0 complex, subunit F6(ATP5J) is a multisubunit membrane-bound enzyme complex consisting of an F0 segment embedded in the membrane and an F1 segment attached to the F0. It is also a component of mitochondrial ATP synthase which is required for the interactions of the catalytic and proton-translocating segments. Human ATP5J shares 72% sequence identity with rat ATP5J. This import signal peptide is rich in basic amino acids, devoid of acidic amino acids, and amphiphilic, which allows it to be water-soluble yet capable of passage through the phospholipid membrane bilayers. Moreover, it is circulating and functions as an endogenous vasoconstrictor by inhibiting cytosolic phospholipase A2.

Product Info

Amount :	100 µg/vial
Purification :	Immunogen affinity purified.
Content :	Each vial contains 5mg BSA, 0.9mg NaCl, 0.2mg Na2HPO4, 0.05mg Thimerosal, 0.05mg NaN3. Reconstitute : Add 0.2ml of distilled water will yield a concentration of 500ug/ml.
Storage condition :	At -20°C for one year. After reconstitution, at 4°C for one month. It can also be aliquotted and stored frozen at -20°C for a longer time. Avoid repeated freezing and thawing.

Application Note

Western blot : 0.1-0.5µg/ml

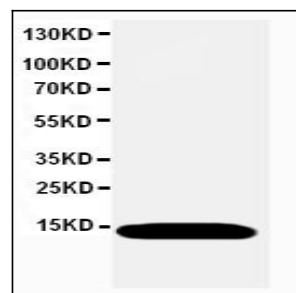


Figure 1: Anti-ATP5J antibody(39-2025). Western blotting: Rat Liver Tissue Lysate.