

39-2034: Polyclonal Antibody to Anti-CD22 Antibody(Discontinued)

Clonality :	Polyclonal
Application :	WB
Reactivity :	Human
Gene :	CD22
Gene ID :	933
Uniprot ID :	P20273
Alternative Name :	B-cell receptor CD22; B-lymphocyte cell adhesion molecule; BL-CAM; Sialic acid-binding Ig-like lectin 2; Siglec-2; T-cell surface antigen Leu-14; CD22; CD22; SIGLEC2
Isotype :	Rabbit IgG
Immunogen Information :	A synthetic peptide corresponding to a sequence at the C-terminus of human CD22(656-670aa RPQAQENVYVILKH), different from the related mouse sequence by three amino acids.

Description

CD22 is a surface glycoprotein of B lymphocytes that is rapidly phosphorylated on cytoplasmic tyrosines after antigen receptor cross-linking. CD22 is a negative regulator of antigen receptor signaling whose onset of expression at the mature B cell stage may serve to raise the antigen concentration threshold required for B cell triggering. The human CD22 gene is expressed specifically in B lymphocytes and likely has an important function in cell-cell interactions. The B cell coreceptor CD22 plays an important role in regulating signal transduction via the B cell Ag receptor.³ CD22 is located within the band region q13.1 of chromosome 19.

Product Info

Amount :	100 µg/vial
Purification :	Immunogen affinity purified.
Content :	Each vial contains 5mg BSA, 0.9mg NaCl, 0.2mg Na ₂ HPO ₄ , 0.05mg Thimerosal, 0.05mg NaN ₃ . Reconstitute : Add 0.2ml of distilled water will yield a concentration of 500ug/ml.
Storage condition :	At -20°C for one year. After reconstitution, at 4°C for one month. It can also be aliquotted and stored frozen at -20°C for a longer time. Avoid repeated freezing and thawing.

Application Note

Western blot : 0.1-0.5µg/ml; Immunohistochemistry(Paraffin-embedded Section) : 0.5-1µg/ml

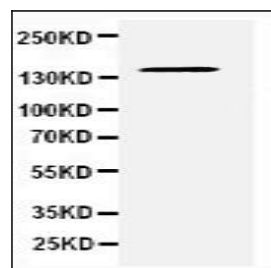


Figure 1: Anti-CD22 antibody(39-2034). Western blotting: RAJI Cell Lysate.

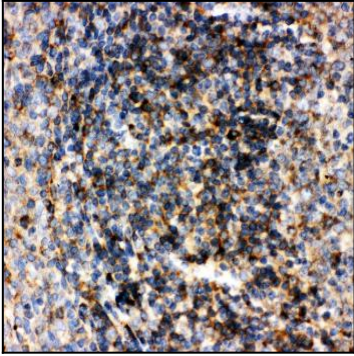


Figure 2: Anti-CD22 antibody(39-2034). IHC(P): Human Tonsil Tissue.