

## 39-2035: Anti-CD22 Polyclonal Antibody

<b>Clonality :</b>	Polyclonal
<b>Application :</b>	WB,IHC-P
<b>Reactivity :</b>	Human
<b>Gene :</b>	CD22
<b>Gene ID :</b>	933
<b>Uniprot ID :</b>	P20273
<b>Format :</b>	Lyophilized
<b>Alternative Name :</b>	B-cell receptor CD22; B-lymphocyte cell adhesion molecule; BL-CAM; Sialic acid-binding Ig-like lectin 2; Siglec-2; T-cell surface antigen Leu-14; CD22; CD22; SIGLEC2
<b>Isotype :</b>	Rabbit IgG
<b>Immunogen Information :</b>	A synthetic peptide corresponding to a sequence at the C-terminus of human CD22(832-847aa ERPQAQENVYVILKH).

### Description

CD22 is a surface glycoprotein of B lymphocytes that is rapidly phosphorylated on cytoplasmic tyrosines after antigen receptor cross-linking. CD22 is a negative regulator of antigen receptor signaling whose onset of expression at the mature B cell stage may serve to raise the antigen concentration threshold required for B cell triggering. The human CD22 gene is expressed specifically in B lymphocytes and likely has an important function in cell-cell interactions. The B cell coreceptor CD22 plays an important role in regulating signal transduction via the B cell Ag receptor.<sup>3</sup> CD22 is located within the band region q13.1 of chromosome 19.

### Product Info

<b>Amount :</b>	100 µg/vial
<b>Purification :</b>	Immunogen affinity purified.
<b>Content :</b>	Each vial contains 5mg BSA, 0.9mg NaCl, 0.2mg Na <sub>2</sub> HPO <sub>4</sub> , 0.05mg Thimerosal, 0.05mg NaN <sub>3</sub> . Reconstitute : Add 0.2ml of distilled water will yield a concentration of 500ug/ml.
<b>Storage condition :</b>	At -20°C for one year. After reconstitution, at 4°C for one month. It can also be aliquotted and stored frozen at -20°C for a longer time. Avoid repeated freezing and thawing.

### Application Note

Western blot : 0.1-0.5 µg/ml; Immunohistochemistry(Paraffin-embedded Section) : 0.5-1 µg/ml

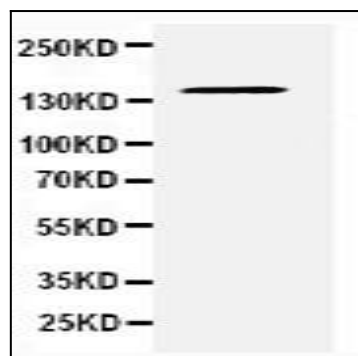


Figure 1: Anti-CD22 antibody(39-2035). Western blotting: RAJI Cell Lysate.

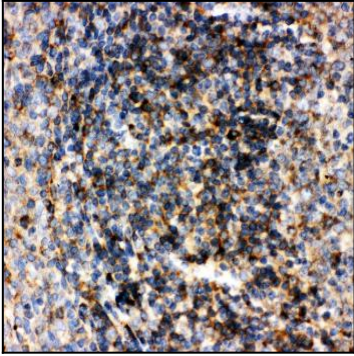


Figure 2: Anti-CD22 antibody(39-2035). IHC(P): Human Tonsil Tissue.