

## 39-2061: Anti-SOCS1 Polyclonal Antibody

<b>Clonality :</b>	Polyclonal
<b>Application :</b>	WB,IHC-P
<b>Reactivity :</b>	Human, Rat
<b>Gene :</b>	SOCS1
<b>Gene ID :</b>	8651
<b>Uniprot ID :</b>	O15524
<b>Format :</b>	Lyophilized
<b>Alternative Name :</b>	Suppressor of cytokine signaling 1; SOCS-1; JAK-binding protein; JAB; STAT-induced STAT inhibitor 1; SSI-1; Tec-interacting protein 3; TIP-3; SOCS1; SSI1, TIP3
<b>Isotype :</b>	Rabbit IgG
<b>Immunogen Information :</b>	A synthetic peptide corresponding to a sequence at the C-terminus of human SOCS1(197-211aa NPVLRDYLSSFPFQI), identical to the related mouse and rat sequences.

### Description

Suppressor of cytokine signaling 1(SOCS1), also known as Jak-binding protein(JAB), is a negative regulator to a subset of protein-tyrosine kinases. This 211-amino acid protein has a molecular mass of about 23.5 kD. The TEC-binding region of SOCS1 resides in the N terminus. SOCS1 associates with Tec and suppresses its kinase activity. The SOCS1 gene is intronless and is mapped to on chromosome 16p13.13. SOCS1 regulates the JAK/STAT signal-transduction pathway. Moreover, it contributes to protection against hepatic injury and fibrosis, and may also protect against hepatocarcinogenesis.

### Product Info

<b>Amount :</b>	100 µg/vial
<b>Purification :</b>	Immunogen affinity purified.
<b>Content :</b>	Each vial contains 5mg BSA, 0.9mg NaCl, 0.2mg Na <sub>2</sub> HPO <sub>4</sub> , 0.05mg Thimerosal, 0.05mg NaN <sub>3</sub> . Reconstitute : Add 0.2ml of distilled water will yield a concentration of 500ug/ml.
<b>Storage condition :</b>	At -20°C for one year. After reconstitution, at 4°C for one month. It can also be aliquotted and stored frozen at -20°C for a longer time. Avoid repeated freezing and thawing.

### Application Note

Western blot : 0.1-0.5 µg/ml; Immunohistochemistry(Paraffin-embedded Section) : 0.5-1 µg/ml

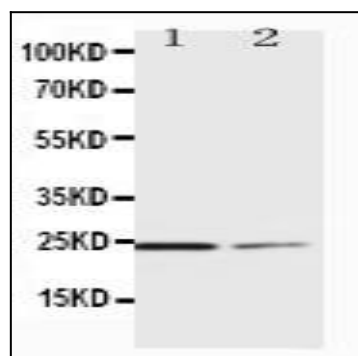


Figure 1: Anti-SOCS1 antibody(39-2061). Western blotting : Lane 1: HT1080 Cell Lysate , Lane 2: COLO320 Cell Lysate.

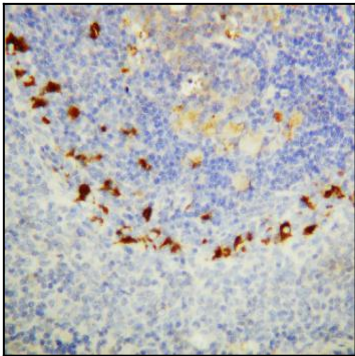


Figure 2: Anti-SOCS1 antibody(39-2061). IHC(P): Rat Spleen Tissue.