

39-2063: Anti-TIMP2 Polyclonal Antibody

Clonality :	Polyclonal
Application :	IHC-P,ELISA
Reactivity :	Human
Gene :	TIMP2
Gene ID :	7077
Uniprot ID :	P16035
Format :	Lyophilized
Alternative Name :	Metalloproteinase inhibitor 2; CSC-21K; Tissue inhibitor of metalloproteinases 2; TIMP-2; TIMP2
Isotype :	Rabbit IgG
Immunogen Information :	A synthetic peptide corresponding to a sequence at the C-terminus of human TIMP2(205-220aa RGAAPPKQEFLDIEDP), identical to the related mouse and rat sequences.

Description

TIMP metalloproteinase inhibitor 2, a tissue inhibitor of metalloproteinases, also known as TIMP2, is a human gene, thought to be a metastasis suppressor. This gene is a member of the TIMP gene family. The proteins encoded by this gene family are natural inhibitors of the matrix metalloproteinases, a group of peptidases involved in degradation of the extracellular matrix. In addition to an inhibitory role against metalloproteinases, the encoded protein has a unique role among TIMP family members in its ability to directly suppress the proliferation of endothelial cells. As a result, the encoded protein may be critical to the maintenance of tissue homeostasis by suppressing the proliferation of quiescent tissues in response to angiogenic factors, and by inhibiting protease activity in tissues undergoing remodelling of the extracellular matrix.

Product Info

Amount :	100 µg/vial
Purification :	Immunogen affinity purified.
Content :	Each vial contains 5mg BSA, 0.9mg NaCl, 0.2mg Na ₂ HPO ₄ , 0.05mg Thimerosal, 0.05mg NaN ₃ . Reconstitute : Add 0.2ml of distilled water will yield a concentration of 500ug/ml.
Storage condition :	At -20°C for one year. After reconstitution, at 4°C for one month. It can also be aliquotted and stored frozen at -20°C for a longer time. Avoid repeated freezing and thawing.

Application Note

Immunohistochemistry(Paraffin-embedded Section) : 0.5-1 µg/ml; ELISA : 0.1-0.5 µg/ml

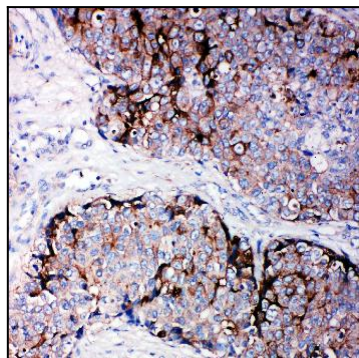


Figure 1: Anti-TIMP2 antibody(39-2063). IHC(P): Human Mammary Cancer Tissue.