

## 39-2065: Anti-TIMP4 Polyclonal Antibody

<b>Clonality :</b>	Polyclonal
<b>Application :</b>	WB,IHC-P
<b>Reactivity :</b>	Human, Rat
<b>Gene :</b>	TIMP4
<b>Gene ID :</b>	7079
<b>Uniprot ID :</b>	Q99727
<b>Format :</b>	Lyophilized
<b>Alternative Name :</b>	Metalloproteinase inhibitor 4; Tissue inhibitor of metalloproteinases 4; TIMP-4; TIMP4
<b>Isotype :</b>	Rabbit IgG
<b>Immunogen Information :</b>	A synthetic peptide corresponding to a sequence at the C-terminus of human TIMP4(208-224aa YRGHLPLRKEFVDIVQP), different from the related rat sequence by two amino acids, and from the related mouse sequence by three amino acids.

## Description

Metalloproteinase inhibitor 4 is an enzyme that in humans is encoded by the TIMP4 gene. And this gene is mapped to chromosome 3p25. This gene belongs to the TIMP gene family. The proteins encoded by this gene family are inhibitors of the matrix metalloproteinases, a group of peptidases involved in degradation of the extracellular matrix. The secreted, netrin domain-containing protein encoded by this gene is involved in regulation of platelet aggregation and recruitment and may play role in hormonal regulation and endometrial tissue remodeling.

## Product Info

<b>Amount :</b>	100 µg/vial
<b>Purification :</b>	Immunogen affinity purified.
<b>Content :</b>	Each vial contains 5mg BSA, 0.9mg NaCl, 0.2mg Na <sub>2</sub> HPO <sub>4</sub> , 0.05mg Thimerosal, 0.05mg NaN <sub>3</sub> . Reconstitute : Add 0.2ml of distilled water will yield a concentration of 500ug/ml.
<b>Storage condition :</b>	At -20°C for one year, at 4°C for one month. Avoid repeated freezing and thawing.

## Application Note

Western blot : 0.1-0.5 µg/ml; Immunohistochemistry(Paraffin-embedded Section) : 0.5-1 µg/ml

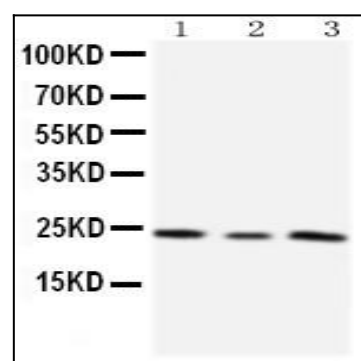


Figure 1: Anti-TIMP4 antibody(39-2065). Western blotting : Lane 1: HT1080 Cell Lysate , Lane 2: HELA Cell Lysate, Lane 3: SMMC Cell Lysate.