

### 39-2097: Polyclonal Antibody to Anti-APAF1 Antibody(Discontinued)

<b>Clonality :</b>	Polyclonal
<b>Application :</b>	WB
<b>Reactivity :</b>	Human
<b>Gene :</b>	APAF1
<b>Gene ID :</b>	317
<b>Uniprot ID :</b>	O14727
<b>Alternative Name :</b>	Apoptotic protease-activating factor 1; APAF-1; APAF1; KIAA0413
<b>Isotype :</b>	Rabbit IgG
<b>Immunogen Information :</b>	A synthetic peptide corresponding to a sequence at the N-terminal of human APAF1, identical to the related mouse sequence, and different from the related rat sequence by one amino acid.

#### Description

Apoptotic peptidase activating factor 1, also known as APAF1, is a protein which in humans is encoded by the APAF1 gene. This gene is mapped to chromosome 12q23. It encodes a cytoplasmic protein that initiates apoptosis. And it is an essential downstream effector of p53-mediated apoptosis. This protein contains several copies of the WD40 repeat domain, a caspase recruitment domain(CARD), and an ATPase domain(NB-ARC). In the presence of cytochrome c and dATP, APAF1 assembles into an oligomeric apoptosome, which is responsible for activation of procaspase-9 and maintenance of the enzymatic activity of processed caspase-9. Furthermore, APAF1 is inactivated in metastatic melanomas, leading to defects in the execution of apoptotic cell death. Additionally, APAF1 has been shown to interact with NLRP1, Caspase-9, APIP, BCL2-like 1 and HSPA4.

#### Product Info

<b>Amount :</b>	100 µg/vial
<b>Purification :</b>	Immunogen affinity purified.
<b>Content :</b>	Each vial contains 5mg BSA, 0.9mg NaCl, 0.2mg Na <sub>2</sub> HPO <sub>4</sub> , 0.05mg Thimerosal, 0.05mg NaN <sub>3</sub> . Reconstitute : Add 0.2ml of distilled water will yield a concentration of 500ug/ml.
<b>Storage condition :</b>	At -20°C for one year. After reconstitution, at 4°C for one month. It can also be aliquotted and stored frozen at -20°C for a longer time. Avoid repeated freezing and thawing.

#### Application Note

Western blot : 0.1-0.5µg/ml; Immunohistochemistry(Paraffin-embedded Section) : 0.5-1µg/ml

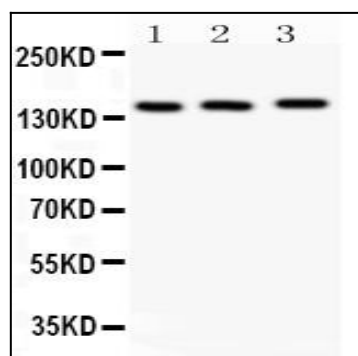


Figure 1: Anti-APAF1 antibody(39-2097). Western blotting: Lanes: Anti APAF1(39-2097) at 0.5ug/ml with Lane 1: Rat Brain Tissue Lysate at 50ug, Lane 2: COLO320 Whole Cell Lysate at 40ug, Lane 3: MCF-7 Whole Cell Lysate at 40ug. Predicted band size: 140 kDa. Observed band size: 140 kDa.