

## 39-2156: Anti-Adiponectin Polyclonal Antibody

<b>Clonality :</b>	Polyclonal
<b>Application :</b>	WB,IHC-P
<b>Reactivity :</b>	Mouse, Rat
<b>Gene :</b>	Adipoq
<b>Gene ID :</b>	246253
<b>Uniprot ID :</b>	Q8K3R4
<b>Format :</b>	Lyophilized
<b>Alternative Name :</b>	30 kDa adipocyte complement-related protein ; Adiponectin, C1Q and collagen domain containing ; Protein Adipoq ; Adipoq ; Acdc ; rCG_36676
<b>Isotype :</b>	Rabbit IgG
<b>Immunogen Information :</b>	E.coli-derived Rat Adiponectin recombinant protein (Position: I19-N244). Rat Adiponectin shares 90% amino acid (aa) sequence identity with Mouse Adiponectin.

### Description

Adiponectin, also known as APM1 or ACDC, is a protein which in humans is encoded by the ADIPOQ gene. It is mapped to chromosome 16 in a region showing homology of synteny with human 3q27. By RNase protection and Western blot analysis, it has been showed that Adiponectin is expressed by differentiated adipocytes as a 33-kD protein that is also detectable in serum. By sequence comparisons, it has been found that links between APM1 and TNF family ligands as well as to cytokines expressed by T cells. Adiponectin is a protein hormone that modulates a number of metabolic processes, including glucose regulation and fatty acid oxidation. This gene is exclusively secreted from adipose tissue (and also from the placenta in pregnancy) into the bloodstream and is very abundant in plasma relative to many hormones.

### Product Info

<b>Amount :</b>	100 µg/vial
<b>Purification :</b>	Immunogen affinity purified.
<b>Content :</b>	Each vial contains 5mg BSA, 0.9mg NaCl, 0.2mg Na <sub>2</sub> HPO <sub>4</sub> , 0.05mg NaN <sub>3</sub> . Reconstitute : Add 0.2ml of distilled water will yield a concentration of 500ug/ml.
<b>Storage condition :</b>	At -20°C for one year. After reconstitution, at 4°C for one month. It can also be aliquotted and stored frozen at -20°C for a longer time. Avoid repeated freezing and thawing.

### Application Note

Western blot : 0.1-0.5 µg/ml; Immunohistochemistry(Paraffin-embedded Section) : 0.5-1 µg/ml

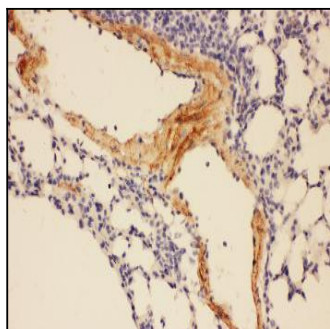


Figure 1: Anti-Adiponectin antibody(39-2156). IHC(P): Mouse Lung Tissue.

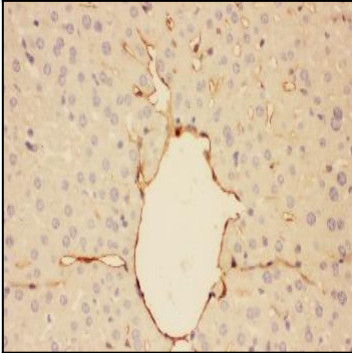


Figure 2: Anti-Adiponectin antibody(39-2156). IHC(P): Mouse Liver Tissue.

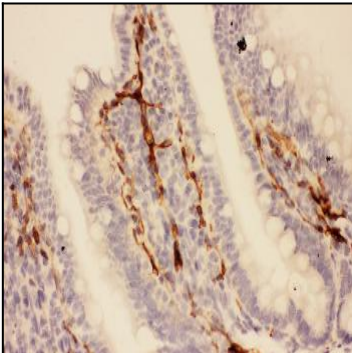


Figure 3: Anti-Adiponectin antibody(39-2156). IHC(P): Rat Intestine Tissue

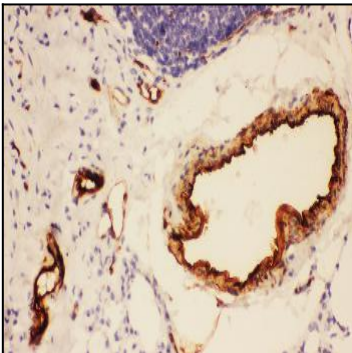


Figure 4: Anti-Adiponectin antibody(39-2156). IHC(P): Rat Lung Tissue.

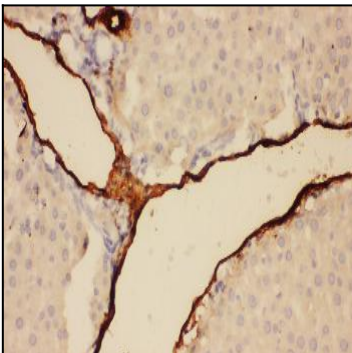


Figure 5: Anti-Adiponectin antibody(39-2156). IHC(P): Rat Liver Tissue.

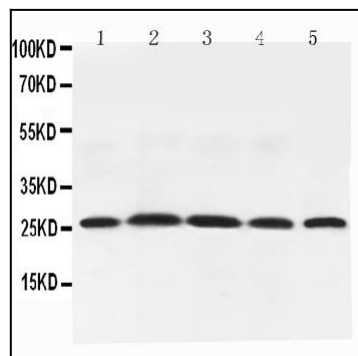


Figure 6: Anti-Adiponectin antibody(39-2156). Lanes: Anti-Adiponectin(39-2156) at 0.5ug/ml, Lane 1: Rat Testis Tissue Lysate at 40ug, Lane 2: Rat Spleen Tissue Lysate at 40ug, Lane 3: Rat Skeletal Muscle Tissue Lysate at 40ug, Lane 4: Rat Cardiac Muscle Tissue Lysate at 40ug, Lane 5: Rat Liver Tissue Lysate at 40ug. Predicted band size: 26 kDa. Observed band size: 26 kDa.