

39-2157: Anti-CNTF Polyclonal Antibody

Clonality :	Polyclonal
Application :	WB,IHC-P
Reactivity :	Human
Gene :	CNTF
Gene ID :	1270
Uniprot ID :	P26441
Alternative Name :	Ciliary neurotrophic factor; CNTF; CNTF
Isotype :	Rabbit IgG
Immunogen Information :	E.coli-derived Human CNTF recombinant protein (Position: A2-M200). Human CNTF shares 83% and 84% amino acid (aa) sequence identity with Mouse and Rat CNTF, respectively.

Description

Ciliary neurotrophic factor (CNTF) is a potent polypeptide hormone whose actions appear to be restricted to the nervous system where it promotes survival, neurotransmitter synthesis and neurite outgrowth in certain neuronal populations. The CNTF gene is located on chromosome 11, as determined using human-hamster somatic cell hybrids. The CNTF protein is highly conserved in evolution. The amino acid (aa) sequences of rat and rabbit CNTF translated from cDNAs display approx. 85% homology with the deduced aa sequence encoding human CNTF. CNTF induces weight loss and improves glucose tolerance in humans and rodents. CNTF is thought to act centrally by inducing hypothalamic neurogenesis to modulate food intake and peripherally by altering hepatic gene expression, in a manner similar to that of leptin.

Product Info

Amount :	100 µg/vial
Purification :	Immunogen affinity purified.
Content :	Each vial contains 5mg BSA, 0.9mg NaCl, 0.2mg Na ₂ HPO ₄ , 0.05mg NaN ₃ . Reconstitute : Add 0.2ml of distilled water will yield a concentration of 500ug/ml.
Storage condition :	At -20°C for one year. After reconstitution, at 4°C for one month. It can also be aliquotted and stored frozen at -20°C for a longer time. Avoid repeated freezing and thawing.

Application Note

Western blot : 0.1-0.5 µg/ml; Immunohistochemistry(Paraffin-embedded Section) : 0.5-1 µg/ml

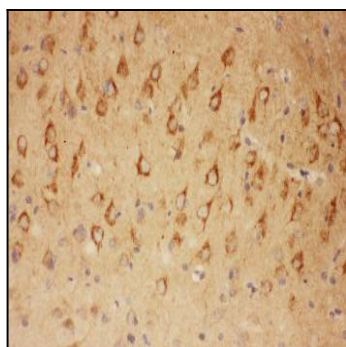


Figure 1: Anti-CNTF antibody(39-2157). IHC(P): Rat Brain Tissue.

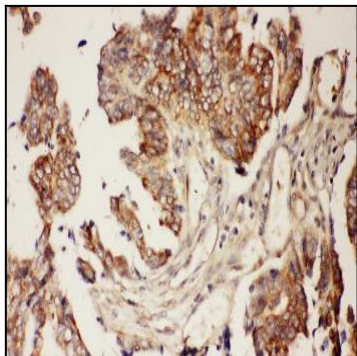


Figure 2: Anti-CNTF antibody(39-2157). IHC(P): Human Intestinal Cancer Tissue.

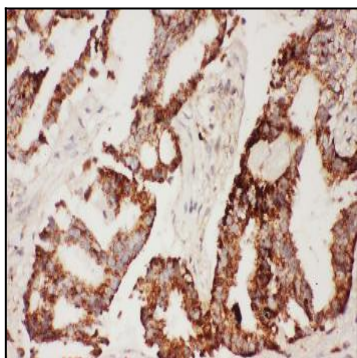


Figure 3: Anti-CNTF antibody(39-2157). IHC(P): Human Lung Cancer Tissue.

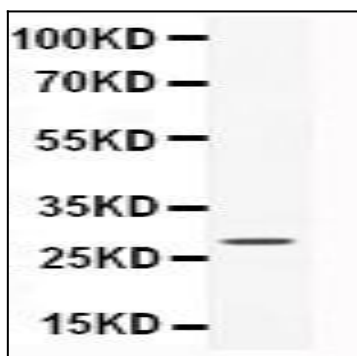


Figure 4: Anti-CNTF antibody(39-2157). Lanes: Anti-CNTF(39-2157) at 0.5ug/ml. WB: Recombinant Human CNTF Protein 0.5ng. Predicted band size: 28 kDa. Observed band size: 28 kDa.