

10-4128-F: Monoclonal Antibody to Human CD13 (Clone: BF10) FITC Conjugated

Clonality :	Monoclonal
Clone Name :	BF10
Application :	FACS
Reactivity :	Human
Conjugate :	FITC
Gene :	ANPEP
Gene ID :	290
Uniprot ID :	P15144
Format :	Purified
Alternative Name :	Aminopeptidase N,Alanyl aminopeptidase,Aminopeptidase M,Microsomal aminopeptidase,gp150,
Isotype :	Mouse IgG1 Kappa
Immunogen Information :	KG-1a cell line were used as immunogen for this antibody.

Product Info

Amount :	25 µg / 100 µg
Purification :	Protein G Chromatography
Content :	25 µg in 125 µl/100 µg in 500 µl Tris and 0.05% sodium azide. Sodium azide is highly toxic.
Storage condition :	Store the antibody at 4°C, stable for 6 months.

Application Note

FACS: 0.2-0.5 µg /10⁶ cells

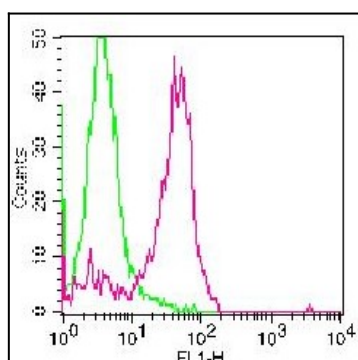


Fig-1: Cell Surface flow analysis of Anti- hCD13 in PBMC (Granulocytes gated) using 0.2 µg/10⁶ cells. Green represents FITC conjugated isotype control (ABEOMICS); red represents FITC conjugated anti-CD13 antibody (10-4128-F).