

## 10-4180: Monoclonal antibody to CD5L (Clone: ABM55F1)

<b>Clonality :</b>	Monoclonal
<b>Clone Name :</b>	ABM55F1
<b>Application :</b>	FACS, WB
<b>Reactivity :</b>	Human
<b>Gene :</b>	CD5L
<b>Gene ID :</b>	922
<b>Uniprot ID :</b>	O43866
<b>Format :</b>	Purified
<b>Alternative Name :</b>	CD5 antigen-like, Apoptosis inhibitor expressed by macrophages, hAIM, IgM-associated peptide, SP-alpha
<b>Isotype :</b>	Mouse IgG2b Kappa
<b>Immunogen Information :</b>	A partial length recombinant protein of CD5L (amino acid 14-226) was used as the immunogen for this antibody.

### Product Info

<b>Amount :</b>	25 µg / 100 µg
<b>Purification :</b>	Protein G Chromatography
<b>Content :</b>	25 µg in 50 µl/100 µg in 200 µl PBS containing 0.05% BSA and 0.05% sodium azide. Sodium azide is highly toxic.
<b>Storage condition :</b>	Store the antibody at 4°C, stable for 6 months. For long-term storage, store at -20°C. Avoid repeated freeze and thaw cycles.

### Application Note

FACS analysis: 2-4 µg/10<sup>6</sup> cells, Western blot analysis : 2-4 µg/ml

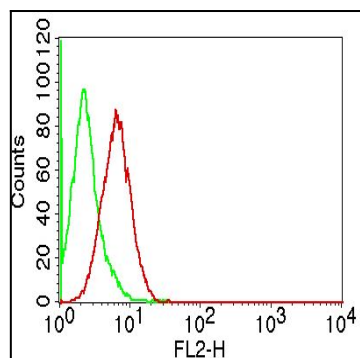


Figure-1: Intra cellular flow analysis of CD5L on Jurkat cells using 2 µg/10<sup>6</sup> cells of CD5L antibody (Clone: ABM55F1). Green represents isotype control; red represents anti-CD5L antibody. Goat anti-mouse PE conjugate was used as secondary antibody

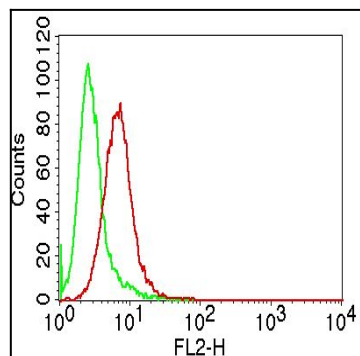


Figure-2: Intra cellular flow analysis of CD5L on Raji cells using 2  $\mu\text{g}/10^6$  cells of CD5L antibody (Clone: ABM55F1). Green represents isotype control; red represents anti-CD5L antibody. Goat anti-mouse PE conjugate was used as secondary antibody

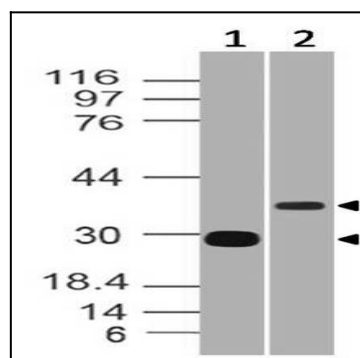


Figure-3: Western blot analysis of CD5L. Anti CD5L (Clone: ABM55F1) was used at 0.5  $\mu\text{g}/\text{ml}$  in Recombinant and 2  $\mu\text{g}/\text{ml}$  in h spleen lysates.