

10-4126: Monoclonal Antibody to Mouse CD16/32 (Clone: 2.4G2)

Clonality :	Monoclonal
Clone Name :	2.4G2
Application :	FACS
Reactivity :	Mouse
Gene :	Fcgr2, Fcgr3
Gene ID :	14130
Uniprot ID :	P08101, P08508
Format :	Purified
Alternative Name :	Fc gamma receptor IIB, IgG Fc receptor II beta, Lymphocyte antigen 17, Fcgr2b, Ly-17, /Low affinity immunoglobulin gamma Fc region receptor III, FcRIII
Isotype :	Rat IgG2b k
Immunogen Information :	Mouse BALB/c Macrophage J774 Cell Line

Product Info

Amount :	25 µg / 100 µg
Purification :	Protein G Chromatography
Content :	25 µg in 50 µl/100 µg in 200 µl PBS containing 0.05% BSA and 0.05% sodium azide. Sodium azide is highly toxic.
Storage condition :	Store the antibody at 4°C, stable for 6 months. For long-term storage, store at -20°C. Avoid repeated freeze and thaw cycles.

Application Note

FACS analysis: 0.5-1 µg/10⁶ cells

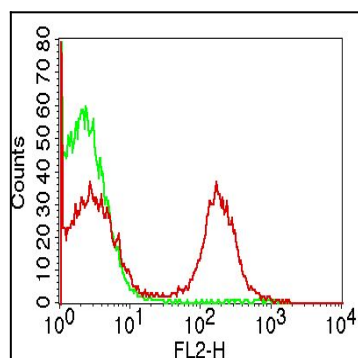


Figure-1: Cell surface flowcytometric analysis of mCD16/32 in Mouse splenocytes using 0.5 µg/10⁶ cells of mCD16/32 (Clone:2.4G2). Green represent Isotype control and Red represent Anti-CD16/32 antibody (10-4126). Anti-Rat PE conjugated was used as secondary antibody.

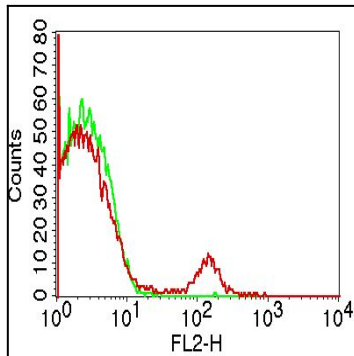


Figure-2: Cell surface flowcytometric analysis of mCD16/32 in Mouse Lymph node cells using 0.5 $\mu\text{g}/10^6$ cells of mCD16/32 (Clone:2.4G2). Green represent Isotype control and Red represent Anti-CD16/32 antibody (10-4126). Anti-Rat PE conjugated was used as secondary antibody.