

## 10-8003: Monoclonal Antibody to Lck (Clone: ABM18H9)

<b>Clonality :</b>	Monoclonal
<b>Clone Name :</b>	ABM18H9
<b>Application :</b>	WB
<b>Reactivity :</b>	Human
<b>Gene :</b>	LCK
<b>Gene ID :</b>	3932
<b>Uniprot ID :</b>	P06239
<b>Format :</b>	Purified
<b>Alternative Name :</b>	Leukocyte C-terminal Src kinase, Lymphocyte cell-specific protein-tyrosine kinase, Protein YT16, Proto-oncogene Lck, T cell-specific protein-tyrosine kinase, p56-LCK
<b>Isotype :</b>	Mouse IgG1

### Product Info

<b>Amount :</b>	25 µg / 100 µg
<b>Purification :</b>	Protein G Chromatography
<b>Content :</b>	25 µg in 50 µl/100 µg in 200 µl PBS containing 0.05% BSA and 0.05% sodium azide. Sodium azide is highly toxic.
<b>Storage condition :</b>	Store the antibody at 4°C, stable for 6 months. For long-term storage, store at -20°C. Avoid repeated freeze and thaw cycles.

### Application Note

Western blot analysis: 1-2 µg/ml

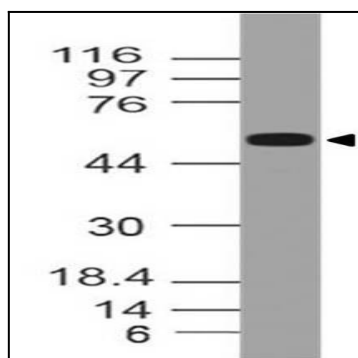


Figure-1: Western blot analysis of Lck. Anti- Lck antibody (Clone: ABM18H9) was used at 1 µg/ml on Daudi lysate.