

### 36-3031: Monoclonal Antibody to Progesterone Receptor (Clone: C-80)(Discontinued)

<b>Clonality :</b>	Monoclonal
<b>Clone Name :</b>	C-80
<b>Application :</b>	IHC
<b>Reactivity :</b>	Human
<b>Gene :</b>	PGR
<b>Gene ID :</b>	5241
<b>Uniprot ID :</b>	P06401
<b>Format :</b>	Purified
<b>Alternative Name :</b>	PGR,NR3C3
<b>Isotype :</b>	Mouse IgG1 Kappa
<b>Immunogen Information :</b>	A progesterone receptor recombinant protein was used as the immunogen for the antibody.

#### Description

The progesterone receptor (also known as NR3C3) is a member of the steroid or nuclear hormone receptor superfamily family of proteins. Family members are involved in diverse physiological functions including embryonic development, cell differentiation, and homeostasis. The receptors function by binding to DNA in the nucleus and regulating the transcription of target genes. The progesterone receptor is activated by its ligand progesterone, which is a steroid hormone involved in the menstrual cycle, pregnancy and embryogenesis. Progesterone receptor expression status is commonly used as a marker for classifying breast cancers and for predicting prognosis and response to endocrine therapy.

#### Product Info

<b>Amount :</b>	100 µg
<b>Purification :</b>	Protein G Chromatography
<b>Content :</b>	25 µg in 50 µl/100 µg in 200 µl PBS containing 0.05% BSA and 0.05% sodium azide. Sodium azide is highly toxic.
<b>Storage condition :</b>	Store the antibody at 4°C; stable for 6 months. For long-term storage; store at -20°C. Avoid repeated freeze and thaw cycles.

#### Application Note

Immunohistochemical analysis: 1:500-1:800

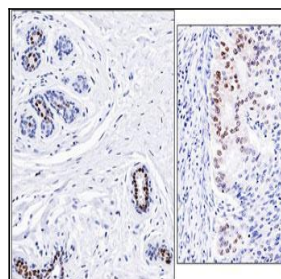


Fig: 1 Immunohistochemical analysis of Progesterone Receptor in normal human breast (left) and endometrial carcinoma (right) using Progesterone Receptor antibody (Clone: C-80) at 1: 500 dilution.