

11-7037: Polyclonal antibody to MTA2

| | |
|--------------------------------|--|
| Clonality : | Polyclonal |
| Application : | WB |
| Reactivity : | Mouse,Human |
| Gene : | MTA2 |
| Gene ID : | 9219 |
| Uniprot ID : | O94776 |
| Format : | Purified |
| Alternative Name : | MTA1L1, PID |
| Isotype : | Rabbit IgG |
| Immunogen Information : | A partial length recombinant MTA2 protein (amino acids 445-668) was used as the immunogen for this antibody. |

Product Info

| | |
|----------------------------|---|
| Amount : | 25 µg / 100 µg |
| Purification : | Protein A Chromatography |
| Content : | 25 µg in 50 µl/100 µg in 200 µl PBS containing 0.05% BSA and 0.05% sodium azide. Sodium azide is highly toxic. |
| Storage condition : | Store the antibody at 4°C, stable for 6 months. For long-term storage, store at -20°C. Avoid repeated freeze and thaw cycles. |

Application Note

Western blot analysis: 1-2 µg/ml

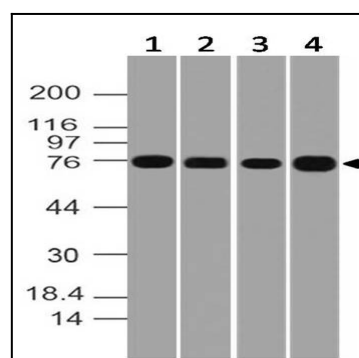


Figure-1: Western blot analysis of MTA2. Anti-MTA2 antibody (11-7037) was used at 1 µg/ml on (1) Raji, (2) K562, (3) RAW and (4) EL-4 lysates.