

## 32-8270: Recombinant Mouse Pigment Epithelium-Derived Factor/PEDF/SERPIN F1

**Gene :** Serpinf1

**Gene ID :** 20317

**Uniprot ID :** P97298

### Description

Source: E. coli.

MW :42kD.

Recombinant Mouse Serpin F1/PEDF is produced by our E.coli expression system and the target gene encoding Asp43-Thr417 is expressed. Serpin F1 is secreted Neurotrophic protein and belongs to the serpin family. Serpin F1 Highly expressed in the liver, gastric glandular mucosa and renal tubules. It is also expressed in the brain, heart, lung retina and testes. It induces extensive neuronal differentiation in retinoblastoma cells. It is potent inhibitor of angiogenesis. As it does not undergo the S (stressed) to R (relaxed) conformational transition characteristic of active serpins, exhibits no serine protease inhibitory activity.

### Product Info

**Amount :** 10 µg / 50 µg

**Content :** Supplied as a 0.2 µm filtered solution of 20mM PB,150mM NaCl,pH7.4.

**Storage condition :** Store at -20°C, stable for 6 months after receipt. Please minimize freeze-thaw cycles.

**Amino Acid :** MDPFFKVPVNKLAADVSNFGYDLYRLRSSASPTGNVLLSPLSVATALSALSLGAERTESVIHRALYYDLITNPDI  
HSTYKELLASVTAPEKNLKSASRIVFERKLRVKSSFVAPLEKSYGTRPRILTGPNRVDLQEIINNWWQAQMKGKIA  
RSTREMPALSILLGVAYFKGQWVTKFDSRKTTLQDFHLEDRTRVPMMSDPKAILRYGLDSDLNCKIAQLP  
LTGSMISIIFFLPLTVTQNLTMIEESLTSEFIHDIDRELKTIQAVLTVPKLKLSEFEGELTKSLQDMKLQSLFESPDFSKI  
TGKPVKLTQVEHRAAFEWNEEGAGSSPGLQPVRLTFPLDYHLNQPFVLRDTRDTGALLFIGRILDPSS

### Application Note

**Endotoxin :** Less than 0.1 ng/µg (1 IEU/µg) as determined by LAL test.

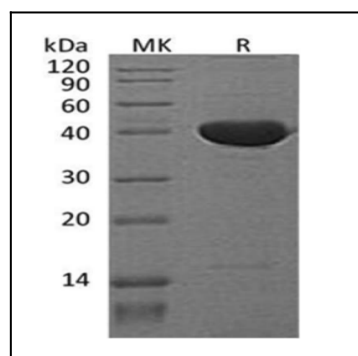


Figure 1: Coomassie Gel