

## 32-8779: Recombinant Human Aldehyde Dehydrogenase 1-A3/ALDH1A3 (N-6His)(Discontinued)

**Gene :** ALDH1A3

**Gene ID :** 220

**Uniprot ID :** P47895

### Description

Source: E.coli.

MW :57.5kD.

Recombinant Human Aldehyde dehydrogenase 1-A3 is produced by our E.coli expression system and the target gene encoding Met1-Pro512 is expressed with a 6His tag at the N-terminus. Aldehyde dehydrogenase 1 family member A3 (ALDH1A3), also known as retinaldehyde dehydrogenase 3 (RALDH3), is a member of the aldehyde dehydrogenase family known to metabolize a wide variety of aldehydes. ALDH1A3 specifically oxidizes retinal to retinoic acid (RA) and is differentially expressed in developing embryonic tissues and adult organs. The RA produced by ALDH1A3 in rodents contributes to the development of skin and hair follicles, brain, tooth buds, lungs, olfactory bulbs, kidneys, eyes, skeletal muscle and seminal vesicles. In recent research, ALDH1A3 could be as a marker of cancer stem cell to predict metastasis or clinical prognosis in many cancers.

### Product Info

**Amount :** 10 µg / 50 µg

**Content :** Supplied as a 0.2 µm filtered solution of 20mM TrisHCl, 150mM NaCl, pH7.5, 20% Glycerol.

**Storage condition :** Store at -20°C, stable for 6 months after receipt. Please minimize freeze-thaw cycles.

**Amino Acid :** MNHKVHHHHHMATANGAVENGQPD RKPPALPRPIRNLEVKFTKIFINNEWHESKSGKKFATCNP  
STREQICEVEEGDKPDVDKAVEAAQVAFQRGSPWRRDLALSRGRLLHQLADLVERDRATLAALET  
MDTGKPFLLHAFIDLEGCI RTLYFAGWADKI QGKTIPTDDNVVCFTRHEPIGVCGAITPWNFP LLML  
VWKLAPALCCGNTMVLKPAEQ TPLTALYLGSLIKEAGFP PGVVNIVPGFGPTVGAAISSHPQINKIAF  
TGSTEVGKLVKEAASRSNLKRV TLELGGKNPCIVCADADLDLAVECAHQGVFFNQGCCTAASRV  
FVEEQVYSEFVRRSVEYAKKRPVGD PFDVKTEQGPQIDQKQFDKILEIESGKKEGAKLECGGSAM  
EDKGLFIKPTVFSEVTDNMRIAKEE IFGPVQPILKFKSIEEVIK RANSTDYGLTAAVFTKNLDKALKLA  
SALESGTVWINCYNALYAQAPFGGFKMSGNGRELGEYALAEYTEVKT VTIKLGDKNP

### Application Note

**Endotoxin :** Less than 0.1 ng/µg (1 IEU/µg) as determined by LAL test.

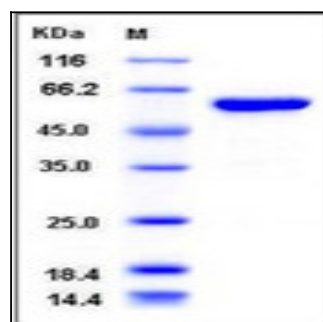


Figure 1: Coomassie Gel tested with ALDH1A3.